



Essex County Council
Education



10 Year Plan

Meeting the demand for mainstream school places in Essex

2023-2032

January 2023

Contents

1. Executive Summary	2
1.1 Areas of growth and additional places planned	2
1.2 Purpose and scope	3
1.3 School Organisation, Funding & Delivery	3
1.4 Net-Zero Schools	4
2. Introduction – Planning for school places	5
2.1 Statutory duty and available funding	5
2.2 Forecasting methodology	5
2.3 Sustainable Schools Strategy	6
2.4 Academies and Free Schools	6
2.5 Factors that influence planning for school places	7
2.6 New Housing, S106 and Community Infrastructure Levy	7
3. Forecasts and Plans	10
3.1 Mid Essex	11
3.1.1 Braintree	12
3.1.2 Chelmsford	19
3.1.3 Maldon	26
3.2 North East Essex	30
3.2.1 Colchester	31
3.2.2 Tendring	38
3.3 South Essex	44
3.3.1 Basildon	45
3.3.2 Brentwood	50
3.3.3 Castle Point	53
3.3.4 Rochford	56
3.4 West Essex	60
3.4.1 Epping Forest	61
3.4.2 Harlow	67
3.4.3 Uttlesford	70
4. Past Expansions and New Schools in Essex	78

1. Executive Summary

1.1 Areas of growth and additional places planned

In Essex (Essex County Council or ECC) as of September 2022 there were 447 primary, infant and junior schools; 78 secondary schools; 2 all-through schools and 1 University Technical College. The total capacity in May 2022 was 130,189 primary places and 104,130 secondary places. In May 2022 there were 118,892 primary pupils and 92,866 secondary pupils (including sixth form) on roll at ECC schools. This was an increase of 637 primary and 1,755 secondary pupils since May 2021.

This increase in demand for school places in Essex is predicted to continue. The forecasts used in this Plan suggest that the total number on roll by 2032/33 will be 126,097 primary pupils and 97,758 secondary school pupils (including sixth form).

The need for new places will be different than the Essex-wide figures above suggest as the available capacity does not always align to areas of growth or the required year groups. As well as this, the National Audit Office report 'Capital Funding for New School Places' (2013) refers to a minimum 5% surplus that the Department for Education (DfE) assumes in its planning as necessary to support operational flexibility.

For school management reasons the number of pupils that can be admitted each September varies, and overall capacity cannot simply be divided by the number of year groups to calculate the number of pupils that can be admitted each year. When planning school places, it is prudent to focus on the Published Admission Number of schools in each area and the number of pupils in each corresponding admission year.

Based on the number of projects anticipated ECC will need to deliver an additional 6,405 primary school places and 1,650 secondary school places over the course of the 10 Year Plan. This does not include some of the new schools that will be required and are being planned to support new garden communities when they come online. As plans for these new communities progress, future iterations of this plan will include forecast demand for school places and more new schools to meet that demand.

1.2 Purpose and scope

The purpose of the 10 Year Plan is to set out:

- The demand for mainstream school places in the next 10 years (from academic year 2023/24 to academic year 2032/33) for each of the pupil place planning areas.
- Solutions already in the pipeline that will meet the forecast demand for school places.
- Potential options to address medium to long term forecast demand for school places.
- The context in which the Essex School Organisation Service operates to ensure there are sufficient school places.

The Plan is updated annually to take into account new forecasts, the capital budget setting cycle, and potential options and solutions that have been identified since the previous version. This 10 Year Plan is based on forecasts produced during the 2021/22 academic year as part of the DfE's annual School Capacity data (SCAP) return.

The scope of the 10 Year Plan is mainstream statutory age education provision in Essex. SEND (Special Educational Needs and Disability), early years, sixth form and other forms of education provision are not within the scope of this plan but are considered when deciding solutions to ensure efficient and sustainable choices are made for capital investment.

1.3 School Organisation, Funding & Delivery

School Organisation

For the purposes of planning school places, ECC organises schools by quadrants, districts and planning groups. The quadrants and their districts are listed in the following table:

Mid Braintree, Chelmsford, Maldon	North East Colchester, Tendring
South Basildon, Brentwood, Castle Point, Rochford	West Epping Forest, Harlow, Uttlesford

Planning groups are groups of schools, defined by geography and admission patterns, wherein a sufficiency of places across the group will generally ensure every child can access a local school place, even if some schools are oversubscribed. Planning groups provide the basis for the annual SCAP (School capacity survey) return, which determines the level of 'Basic Need' funding ECC is allocated. The planning group forecasts are set out in detail in Section 3 of this document.

The Essex School Organisation Service comprises a team of 10 officers who lead and manage the school organisation and pupil place planning activity of the local authority. Officers from the team have assigned quadrants and liaise with schools individually and collectively to discuss current numbers on roll, future demand for places and any projects that need to be completed to ensure

sufficient capacity. Officers from the team also engage with planning authorities, local members, residents, communities, faith groups, developers and all tiers of government. In this way they develop the 10 Year Plan collaboratively with schools and other stakeholders.

Funding & Delivery

ECC uses a mixture of funding sources to finance additional school places. Funding sources available include Basic Need grant from central government; Section 106 / Community Infrastructure Levy contributions from developers; Free School funding from the Education and Skills Funding Agency (ESFA) and contributions from schools. New school places must be funded through these means as ECC has no other grants or funds dedicated to providing school places.

The Capital Programme, which includes the planned spending on education infrastructure, is published annually at www.essex.gov.uk. ECC has a professional in-house Infrastructure Delivery Team. The team assist the development of school expansions and new schools by undertaking viability studies and then leading on the delivery of the capital projects through to completion. Through the work of this team school building projects are delivered to a high standard and at good value, ensuring the best outcome from the investment of public funds.

1.4 Net-Zero Schools

Since the start of 2020 ECC has commissioned all school expansion projects to include renewable energy as a contribution towards combatting climate change. 2021 saw completion of Essex's first new school buildings designed for net-zero carbon in operation. This work complements a programme of energy efficiency upgrades and other works being planned for existing school buildings to further reduce Essex's carbon footprint. From 2023, all new school buildings for basic need expansions, including new schools, will be designed for net-zero carbon in operation.

2. Introduction – Planning for school places

2.1 Statutory duty and available funding

ECC has a statutory duty to ensure sufficient school places for children aged between 4 and 16 years old. Fulfilling this duty, and aligning strategic planning for school places with other service requirements, supports the strategic aims of ECCs plan for levelling up the county, Everyone’s Essex 2021-2025:

- Strong, inclusive, sustainable economy
- High quality environment
- Health, wellbeing and independence for all ages
- A good place for children and families to grow

To discharge this responsibility, school organisation changes are commissioned in response to forecast data that predicts the demand for school places. These school organisation changes include building new schools, expanding existing schools, closing schools, or reducing the intake at schools.

As stated in section 1.3, there are a number of funding sources for delivering school building projects, all of which need to be coordinated through the Council’s Capital Programme. A long-term plan for ensuring sufficient school places is required to enable capital (and revenue) financing to be secured and spent effectively.

Endorsement for the Plan is sought from the Council’s investment boards upon each revision to enable a dynamic response to changes in demand for school places, thereby ensuring that every child in Essex has an appropriate place to go to school.

2.2 Forecasting methodology

School forecasts are prepared for each area using the number on roll in the January 2022 Census; the number of places offered for September 2022; historical trends in admissions; and GP registrations in October 2021 (the number of children registered with a GP’s surgery from NHS data). For year groups beyond reliable GP registration data, an average of the last three potential cohort sizes is taken and Office for National Statistics birth rate trends are applied to estimate long term need. For schools with sixth forms historical staying on rates are calculated and applied to the relevant cohorts.

The number of additional pupils likely to be generated by new housing is added to the forecasts, though it must be recognised that market conditions, and thereby delivery rates, can change. Despite the potential for forecasts to be skewed by changeable housing data, it is important that the 10 Year Plan anticipates the potential increase in households in an area so ECC can meet its

statutory duty to facilitate sufficient school places. These figures are based on 'housing trajectories' supplied by district councils, amended with subsequent planning approvals and information from housing developers and planning authorities. Clearly, external factors such as higher interest rates could slow housing delivery and therefore pupil demand.

The likely demand for additional places at local schools created by new housing is calculated using different factors for houses and flats. One-bedroom units and certain other types of dwellings, such as student accommodation and housing for the elderly, that are unlikely to house children are discounted from the calculation. The factors used for primary pupils are 0.3 additional school pupils per new house and 0.15 additional pupils per new flat. For secondary pupils the factors are 0.2 additional pupils per new house and 0.1 additional pupils per new flat. The gradual build-up of pupils from new housing is modelled through additional factors to stagger the pupil product, rather than the full pupil product being added in the first year that new homes are occupied.

2.3 Sustainable Schools Strategy

The aim of the Sustainable Schools Strategy is to encourage schools which are strong and viable both educationally and financially, and which provide our children with a high-quality education.

The Sustainable Schools Strategy group explores the issues facing schools, including forecast pupil numbers; budget pressures; recruitment and retention; school standards (currently most Essex schools are rated good or outstanding by OFSTED); importance to communities and potential income opportunities. Key indicators are used to provide a framework to consider issues of school sustainability. The intention is to offer assistance to all those involved with schools, helping to assess where early intervention is required.

The group also makes recommendations to the Director of Education to ensure that where possible schools can take proactive decisions to secure a sustainable future and provide a high-quality education.

2.4 Academies and Free Schools

There are more than 300 academies in Essex. The council has a robust procedure in place to support the academy conversion process, which is primarily a legal function.

Free Schools were initially a method for groups of parents or other parties to set up a school that would provide diversity in the school system, often in response to low standards in the local area. Over recent years the Free Schools programme has changed. Not only are all new schools proposed by local authorities considered Free Schools (this has no practical impact on opening new schools), but Free Schools are now being proposed by multi-academy trusts and other groups, in response to forecast demand.

The Free Schools Programme provides an opportunity for ECC to build on a strong collaborative working relationship with the Regional Director and multi-academy trusts in Essex. This will enable ECC to continue to ensure sufficient school places even if / when no schools are under its direct control.

2.5 Factors that influence planning for school places

There are a number of factors that influence strategic thinking and solutions outlined in this 10 Year Plan. These are kept under regular review and include:

- Fluctuation in forecast pupil numbers.
- Local Development Plans (many of which are still ‘emerging’).
- Phasing and timing of actual housing developments and the availability of sites for new school provision (services, access, infrastructure).
- Changing patterns of growth in mid-year migration.
- Schools and Academies adjusting their Published Admission Numbers or capacities.
- Cross border migration patterns and delivery solutions.
- Changes to admissions arrangements.
- Project viability.
- Home to school transport.

The Home to School Transport Budget comprises a grant (which is not ‘ring-fenced’) and a contribution from the Dedicated Schools Grant. This budget is under constant pressure. When considering the strategic need for additional school places in an area, the transport implications are key to determining the locations of solutions, and thereby the cost / benefit of those solutions. Where solutions do not address need locally, and transport must be provided, ECC is obliged to meet the cost of the transport in perpetuity.

2.6 New Housing, Section 106, and Community Infrastructure Levy

The 12 borough / district / city councils in Essex that act as local planning authorities are required to draw up Local Plans. Under the terms of the National Planning Policy Framework (NPPF) these Local Plans must seek to accommodate their objectively assessed housing need through specific deliverable sites in the first five years of the Plan period. In addition, they are required to identify other developable sites for new housing for years 6-10 of the Plan period, to ensure an ongoing five-year supply of housing sites. ECC comments on the likely impact on school places of new housing allocations to help local planning authorities understand how sustainable their plans are for school place planning and, importantly, where they need to allocate land for new school place provision.

To meet the need for new housing, a number of Local Planning Authorities are considering establishing Garden Communities. These will be significant new settlements that will need to be self-sustaining in terms of infrastructure. The precise scale of plans and timescales are still

emerging, so in some cases our forecasts have yet to include this growth. New schools will need to be planned and future versions of this document will consider the needs of these Garden Communities. Our general approach is outlined in the document 'Garden Communities and Planning School Places' which can be downloaded from our web site (www.essex.gov.uk).

A number of the local planning authorities do not have an up to date adopted Local Plan. This has resulted in housing developers submitting speculative planning applications for sites that may not be sustainable for school place provision. In the absence of a five-year land supply the applicant has a strong chance of a successful appeal if the planning application is refused. This can result in housing developments being granted planning permission in areas where there are insufficient surplus school places to accommodate the pupil product from the new homes, but the development is of insufficient scale to generate a developer contribution to fund a new school or the expansion of existing schools. This can be particularly problematic in single school rural areas where there isn't enough site area to expand the local school.

Since these housing developments are not known in advance, they may also afford insufficient time to identify, plan and build places to meet the increased need. This may mean school transport has to be funded. ECC seeks to limit this impact through proactive collaboration with the local planning authorities to aid them in development of their housing plans. The way the team seeks to engage in this is set out in our 'Local and Neighbourhood Planners' Guide to School Organisation' which can also be downloaded from our web site (www.essex.gov.uk).

When the number of pupils generated by new housing is greater than the surplus capacity in permanent accommodation at appropriate local schools, a contribution can be sought from the developer via a Section 106 (s106) agreement. This contribution can be in the form of additional land and / or a financial contribution for new accommodation. Local planning authorities decide whether to support such requests and they have a duty to balance all the requests made by infrastructure providers against the viability of the development. Full details of how developer contributions are sought and calculated can be found in ECC's Developers' Guide to Infrastructure Contributions at www.essex.gov.uk.

The Community Infrastructure Levy (CIL) allows a local planning authority to introduce a fixed charge on development to fund infrastructure that is not being delivered through s106. Of the 12 district councils in Essex only Chelmsford City Council has adopted a CIL. Other councils are considering CIL but it is not thought that all 12 will adopt a charge.

Phasing and timelines for potential new housing developments are closely monitored and viability reports have been commissioned for the delivery of several new schools associated with new housing. Plans are being progressed with developers to ensure that new provision can be provided, at the earliest viable opportunity, where there is insufficient capacity within existing schools to accommodate pupils from the initial phases.

Delivery of new provision is dependent on confirmation of the housing build rate by the developer, planning permissions and the timescale for completion of necessary infrastructure to serve the new school, including services and access. The quality of the environment around the school site is essential, as a new school cannot open in the middle of a building site with no safe walking and cycling routes.

3. Forecasts and plans

The following sections include the school place forecasts at a planning group level, grouped into districts and quadrants. For each district the primary planning groups are shown first, followed by secondary planning groups. Below is an example:

1 2. Kelvedon/ Feering

Current PAN: 130

Current Capacity: 895

2

3 Reception Place Forecast

Year	23/24	24/25	25/26	26/27	27/28	28/29	29/30	30/31	31/32	32/33
+/-	23	26	7	-3	-9	-12	-16	-20	-24	-28

4 Feering CE Primary, Kelvedon St Mary's CE Primary Academy, St Peter's CE Primary

5 Number on Roll (NOR)

Year	NOR
23/24	876
24/25	868
25/26	926
26/27	972
27/28	1,008

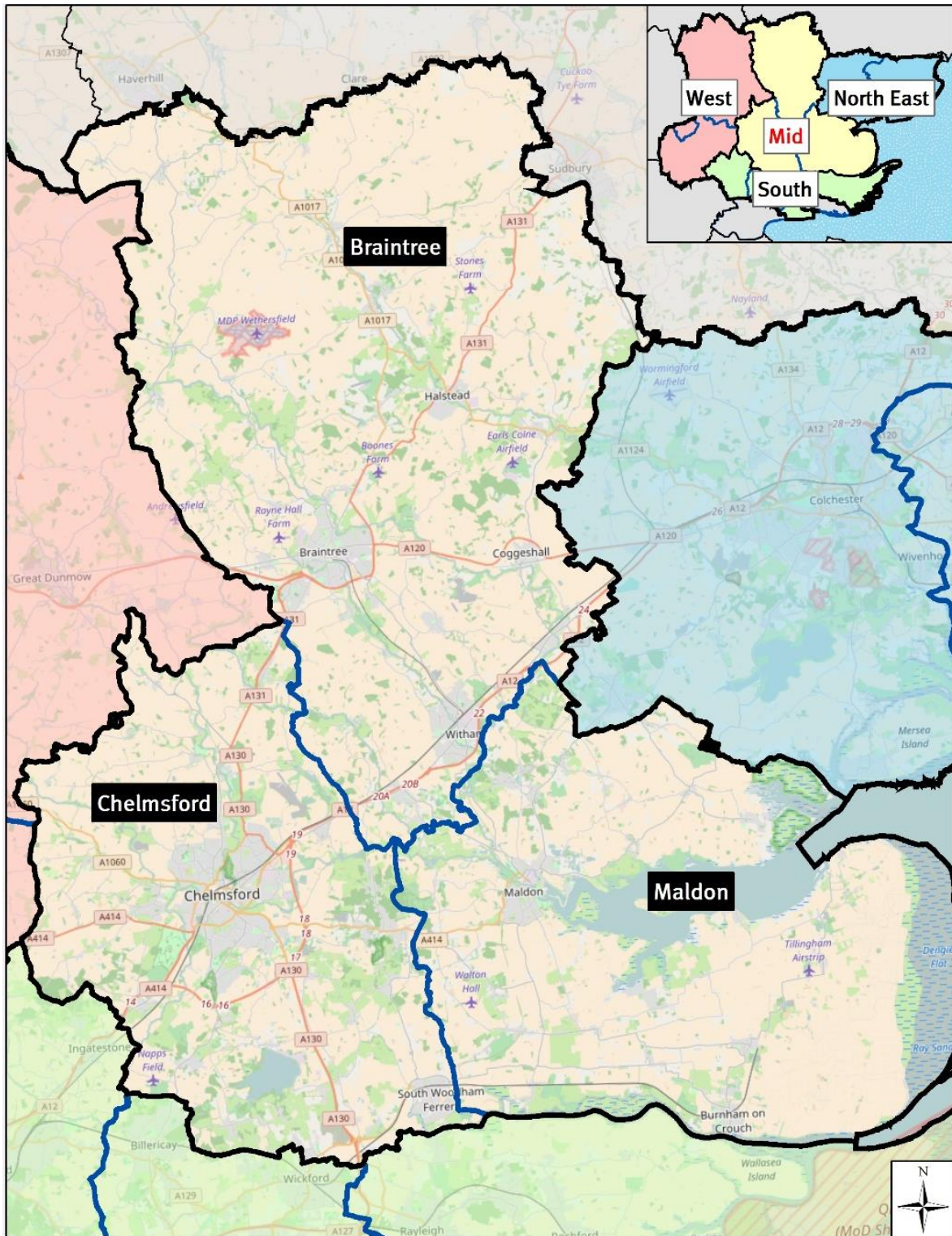
6 Project Pipeline

School	Year	Description	Places
St Peter's CE Primary	25/26	½ form entry expansion	15/105
Feering CE Primary	28/29	Small expansion	5/35

7

- Name** – Each planning group has a name, describing a general geographical area.
- Current PAN** - The Published Admission Number for September 2022 i.e. the number of places available at Reception or Year 7 (the first year of secondary education).
Current Capacity is the total physical capacity of the schools as at May 2022.
- Forecast** – This headline forecast will be for either Reception places (primary) or Year 7 places (secondary). It shows the surplus or deficit of places forecast for the next 10 years, against PAN.
- Schools** – A list of the schools included in the planning group.
- Number on Roll (NOR)** – This data shows the entire forecast school population. This can indicate where additional school places are required in response to high levels of new housing or inward migration, even when the headline forecast doesn't indicate a need.
- Projects Pipeline** – These are the projects the council is proposing, to mitigate any forecast need for additional school places. A school will be named where the project is confirmed, along with the year of implementation and a brief description of the project.
- Places** – In the example (15/105), 15 refers to the number of Reception places created (expected increase in PAN), and 105 refers to the total capacity created across all year groups.

3.1 Mid Essex



For the purposes of school organisation and place planning Mid Essex is Braintree and Maldon districts and Chelmsford City. All three councils have adopted Local Development Plans albeit Chelmsford and Maldon have commenced work on their next Plans.

3.1.1 Braintree

Primary School Planning Groups

1. Witham / Rivenhall

Current PAN: 377

Current Capacity: 2,599

Reception Place Forecast

Year	23/24	24/25	25/26	26/27	27/28	28/29	29/30	30/31	31/32	32/33
+/-	51	36	18	12	10	11	10	10	10	10

Acorn Academy, Chipping Hill Primary, Elm Hall Primary, Holy Family Catholic Primary, Howbridge CofE Junior, Howbridge Infant, Powers Hall Academy, Rivenhall CofE Primary, Templars Academy

Number on Roll (NOR)

Year	NOR
23/24	2,391
24/25	2,463
25/26	2,527
26/27	2,568
27/28	2,584

Project Pipeline

School	Year	Description	Places
New Primary School at Lodge Farm	25/26	Built with capacity to admit 60 per year, opening with PAN of 30	30/420
Expansion of New Primary School	27/28	1 form entry expansion of the new primary school through increasing the PAN	30/0

An education site to accommodate a new primary school has been secured on the Lodge Farm development through a S106 agreement. The DfE have approved a Free School “in principle” to open in September 2025 or 2026.

2. Kelvedon / Feering

Current PAN: 130

Current Capacity: 895

Reception Place Forecast

Year	23/24	24/25	25/26	26/27	27/28	28/29	29/30	30/31	31/32	32/33
+/-	23	26	7	-3	-9	-12	-16	-20	-24	-28

Feering CE Primary, Kelvedon St Mary’s CE Primary Academy, St Peter’s CE Primary

Number on Roll (NOR)

Year	NOR
23/24	876
24/25	868
25/26	926
26/27	972
27/28	1,008

Project Pipeline

School	Year	Description	Places
St Peter’s CE Primary	25/26	½ form entry expansion	15/105
Feering CE Primary	28/29	Small expansion	5/35

3. Halstead / Gosfield

Current PAN: 140

Current Capacity: 995

Reception Place Forecast

Year	23/24	24/25	25/26	26/27	27/28	28/29	29/30	30/31	31/32	32/33
+/-	-12	15	-1	-2	-2	-1	-2	-2	-2	-2

Gosfield Primary, Holy Trinity CE Primary, Richard de Clare Primary, St Andrew's CE Primary

Number on Roll (NOR)

Year	NOR
23/24	955
24/25	942
25/26	965
26/27	995
27/28	998

Project Pipeline

School	Year	Description	Places
No expansion projects currently in pipeline			

Demand for places within this group will be closely monitored to ensure sufficient capacity in the area.

4. Hedingham

Current PAN: 75

Current Capacity: 530

Reception Place Forecast

Year	23/24	24/25	25/26	26/27	27/28	28/29	29/30	30/31	31/32	32/33
+/-	-4	16	3	3	3	4	3	3	3	4

de Vere Primary, St Giles CE Primary, St Peter's CE Primary

Number on Roll (NOR)

Year	NOR
23/24	515
24/25	506
25/26	520
26/27	515
27/28	513

Project Pipeline

School	Year	Description	Places
No expansion projects currently in pipeline			

5. Finchingfield / Bardfield / Wethersfield

Current PAN: 44
Current Capacity: 334

Reception Place Forecast

Year	23/24	24/25	25/26	26/27	27/28	28/29	29/30	30/31	31/32	32/33
+/-	9	8	7	7	7	8	8	8	8	8
Finchingfield CE Primary, Great Bardfield Primary, Wethersfield CE Primary										

Number on Roll (NOR)

Year	NOR
23/24	242
24/25	251
25/26	265
26/27	258
27/28	257

Project Pipeline

School	Year	Description	Places
No expansion projects currently in pipeline			

6. Braintree Town & Surrounds

Current PAN: 751
Current Capacity: 5507

Reception Place Forecast

Year	23/24	24/25	25/26	26/27	27/28	28/29	29/30	30/31	31/32	32/33
+/-	100	104	52	32	13	-1	-19	-36	-52	-65
Beckers Green Primary, Bocking Church Street Primary, Great Bradfords Infant, Great Bradfords Junior, John Bunyan Primary, John Ray Infant, John Ray Junior, Lyons Hall Primary, Notley Green Primary, Rayne Primary, Shalford Primary, St Francis Catholic Primary, St Michael's CE Primary, Stisted CE Primary, White Court Primary, White Notley CE Primary										

Number on Roll (NOR)

Year	NOR
23/24	4,957
24/25	5,014
25/26	5,115
26/27	5,193
27/28	5,255

Project Pipeline

School	Year	Description	Places
New Primary School	28/29	Built with capacity to admit 60 per year, opening with PAN of 30	30/420
Expansion of New Primary School	30/31	1 form entry expansion of the new primary school through increasing the admissions number	30/0

An education site to accommodate a new primary school has been secured on the Panfield Lane development through a S106 agreement.

7. Earls Colne / Colne Engine

Current PAN: 76
 Current Capacity: 532

Reception Place Forecast

Year	23/24	24/25	25/26	26/27	27/28	28/29	29/30	30/31	31/32	32/33
+/-	10	15	7	7	7	8	8	8	8	8
Colne Engine CE Primary, Earls Colne Primary										

Number on Roll (NOR)

Year	NOR
23/24	542
24/25	535
25/26	530
26/27	517
27/28	501

Project Pipeline

School	Year	Description	Places
No expansion projects currently in pipeline			

8. Braintree Rural North

Current PAN: 122
 Current Capacity: 855

Reception Place Forecast

Year	23/24	24/25	25/26	26/27	27/28	28/29	29/30	30/31	31/32	32/33
+/-	26	49	34	35	35	35	35	35	35	35
Belchamp St Paul's CE Primary, Bulmer St Andrew's CE Primary, Ridgewell CE Primary, St Andrew's CE Primary, St John The Baptist CE Primary, St Margaret's CE Primary, Stanley Drapkin Primary										

Number on Roll (NOR)

Year	NOR
23/24	678
24/25	654
25/26	650
26/27	649
27/28	630

Project Pipeline

School	Year	Description	Places
No expansion projects currently in pipeline			

9. Cressing / Silver End

Current PAN: 90
Current Capacity: 630

Reception Place Forecast

Year	23/24	24/25	25/26	26/27	27/28	28/29	29/30	30/31	31/32	32/33
+/-	3	0	-5	-7	-7	-7	-7	-7	-7	-9
Cressing Primary, Silver End Primary										

Number on Roll (NOR)

Year	NOR
23/24	595
24/25	624
25/26	647
26/27	673
27/28	679

Project Pipeline

School	Year	Description	Places
Cressing Primary	25/26	½ form entry expansion	15/105

Demand in this group will be closely monitored. Land for potential school expansion has been secured through S106 agreement, adjacent to Cressing Primary School.

10. Hatfield Peverel / Terling

Current PAN: 77
Current Capacity: 539

Reception Place Forecast

Year	23/24	24/25	25/26	26/27	27/28	28/29	29/30	30/31	31/32	32/33
+/-	12	8	4	3	2	2	2	2	2	2
Hatfield Peverel Infant, Hatfield Peverel St Andrew's Junior, Terling CE Primary										

Number on Roll (NOR)

Year	NOR
23/24	537
24/25	557
25/26	566
26/27	562
27/28	547

Project Pipeline

School	Year	Description	Places
No expansion projects currently in pipeline			

Demand in this group will be closely monitored. The planned new school in Braintree Planning Group 1 will provide extra capacity in the wider area from 2024.

Secondary School Planning Groups

1. Braintree

Current PAN: 670

Current Capacity: 3,750

Year 7 Place Forecast

Year	23/24	24/25	25/26	26/27	27/28	28/29	29/30	30/31	31/32	32/33
+/-	54	41	29	20	-21	-11	-24	-21	-8	-54
Alec Hunter Academy, Notley High School, Tabor Academy										

Number on Roll (NOR)

Year	NOR
23/24	3,445
24/25	3,561
25/26	3,641
26/27	3,646
27/28	3,727

Project Pipeline

School	Year	Description	Places
Alec Hunter Academy	27/28	Increasing PAN within existing accommodation	15/0

2. Witham

Current PAN: 420

Current Capacity: 2,200

Year 7 Place Forecast

Year	23/24	24/25	25/26	26/27	27/28	28/29	29/30	30/31	31/32	32/33
+/-	23	26	11	13	-10	-35	-49	4	-5	-26
Maltings Academy, New Rickstones Academy										

Number on Roll (NOR)

Year	NOR
23/24	2,120
24/25	2,196
25/26	2,258
26/27	2,289
27/28	2,285

Project Pipeline

School	Year	Description	Places
Maltings Academy	27/28	2 form entry expansion	60/300

3. Halstead / Hedingham / Coggeshall

Current PAN: 556

Current Capacity: 2,968

Year 7 Place Forecast

Year	23/24	24/25	25/26	26/27	27/28	28/29	29/30	30/31	31/32	32/33
+/-	54	43	104	93	51	61	83	57	118	74
Hedingham School, Honeywood Community Science School, The Ramsey Academy										

Number on Roll (NOR)

Year	NOR
23/24	2,786
24/25	2,788
25/26	2,766
26/27	2,714
27/28	2,691

Project Pipeline

School	Year	Description	Places
No expansion projects currently in pipeline			

3.1.2 Chelmsford

Primary School Planning Groups

1. Broomfield / Chelmsford Rural North

Current PAN: 153

Current Capacity: 1,149

Reception Place Forecast

Year	23/24	24/25	25/26	26/27	27/28	28/29	29/30	30/31	31/32	32/33
+/-	11	15	-1	-10	-24	-39	-54	-70	-85	-101

Ford End CE Primary, Great Leighs Primary, Great Waltham CE Primary, Little Waltham CE Primary, Broomfield Primary

Number on Roll (NOR)

Year	NOR
23/24	1,037
24/25	1,083
25/26	1,160
26/27	1,195
27/28	1,268

Project Pipeline

School	Year	Description	Places
New Primary School	26/27	Two form entry primary school	60/420

An education site to accommodate a new primary school is included in Chelmsford's Local Plan, as part of a housing allocation in the Great Leighs area. This forecast also includes housing from the initial phase of the North East Chelmsford Garden Community, which will deliver new schools to meet longer term demand.

2. Rettendon / West Hanningfield

Current PAN: 65

Current Capacity: 454

Reception Place Forecast

Year	23/24	24/25	25/26	26/27	27/28	28/29	29/30	30/31	31/32	32/33
+/-	22	31	25	21	20	20	20	20	20	20

Rettendon Primary, St Peter's CE Primary, St Luke's Primary School

Number on Roll (NOR)

Year	NOR
23/24	278
24/25	285
25/26	284
26/27	310
27/28	312

Project Pipeline

School	Year	Description	Places
No expansion projects currently in pipeline			

3. Springfield

Current PAN: 420

Current Capacity: 3,148

Reception Place Forecast

Year	23/24	24/25	25/26	26/27	27/28	28/29	29/30	30/31	31/32	32/33
+/-	31	53	23	20	13	5	-4	-12	-20	-26
Barnes Farm Infant, Barnes Farm Junior, Beaulieu Park School, The Bishops CE & Catholic Primary, Chancellor Park Primary, Perryfields Infant, Perryfields Junior, Springfield Primary, Tyrrells Primary										

Number on Roll (NOR)

Year	NOR
23/24	3,002
24/25	2,973
25/26	2,957
26/27	2,895
27/28	2,900

Project Pipeline

School	Year	Description	Places
Beaulieu Park School	24/25	2 form entry expansion	60/420

From 2023/24 Barnes Farm Infant School's PAN reduces from 90 to 60, which has been considered when developing this plan, and will feed into future forecast figures.

4. Baddow / Galleywood

Current PAN: 270

Current Capacity: 1,902

Reception Place Forecast

Year	23/24	24/25	25/26	26/27	27/28	28/29	29/30	30/31	31/32	32/33
+/-	60	64	31	27	24	22	21	20	19	19
Baddow Hall Infant, Baddow Hall Junior, Beehive Lane Primary, Galleywood Infant, Larkrise Primary, Mildmay Primary and Nursery, St Michael's CE Junior										

Number on Roll (NOR)

Year	NOR
23/24	1,803
24/25	1,775
25/26	1,760
26/27	1,740
27/28	1,717

Project Pipeline

School	Year	Description	Places
No expansion projects currently in pipeline			

5. Melbourne

Current PAN: 180

Current Capacity: 1,246

Reception Place Forecast

Year	23/24	24/25	25/26	26/27	27/28	28/29	29/30	30/31	31/32	32/33
+/-	46	38	29	24	20	15	10	6	5	5
Lawford Mead Primary, Newlands Spring Primary, Parkwood Primary, St Pius X Catholic Primary										

Number on Roll (NOR)

Year	NOR
23/24	1,196
24/25	1,171
25/26	1,168
26/27	1,170
27/28	1,166

Project Pipeline

School	Year	Description	Places
No expansion projects currently in pipeline			

ECC has secured a site for a new primary school as part of the West of Chelmsford housing development. Delivery of a new school will be dependent on the rate of delivery of new housing and forecasts will be monitored closely.

6. Danbury / Bicknacre / East Hanningfield

Current PAN: 114

Current Capacity: 818

Reception Place Forecast

Year	23/24	24/25	25/26	26/27	27/28	28/29	29/30	30/31	31/32	32/33
+/-	20	47	29	28	27	26	26	25	24	22
Danbury Park Primary, East Hanningfield CE Primary, Priory Primary, St John's CE Primary										

Number on Roll (NOR)

Year	NOR
23/24	735
24/25	699
25/26	678
26/27	658
27/28	634

Project Pipeline

School	Year	Description	Places
No expansion projects currently in pipeline			

7. South Woodham

Current PAN: 239

Current Capacity: 1,667

Reception Place Forecast

Year	23/24	24/25	25/26	26/27	27/28	28/29	29/30	30/31	31/32	32/33
+/-	50	52	32	23	21	19	16	14	12	10

Collingwood Primary, Elmwood Primary, St Joseph's Catholic Primary, St Mary's CE Primary, Trinity St Mary's CE Primary, Woodville Primary

Number on Roll (NOR)

Year	NOR
23/24	1,456
24/25	1,460
25/26	1,479
26/27	1,514
27/28	1,528

Project Pipeline

School	Year	Description	Places
No expansion projects currently in pipeline			

8. Writtle / Roxwell / Highwood

Current PAN: 85

Current Capacity: 595

Reception Place Forecast

Year	23/24	24/25	25/26	26/27	27/28	28/29	29/30	30/31	31/32	32/33
+/-	16	18	15	14	14	14	13	13	13	13

Highwood Primary, Roxwell Primary, Writtle Infant, Writtle Junior

Number on Roll (NOR)

Year	NOR
23/24	538
24/25	531
25/26	518
26/27	511
27/28	501

Project Pipeline

School	Year	Description	Places
No expansion projects currently in pipeline			

9. Margaretting / Stock

Current PAN: 42
Current Capacity: 294

Reception Place Forecast

Year	23/24	24/25	25/26	26/27	27/28	28/29	29/30	30/31	31/32	32/33
+/-	8	3	5	4	4	4	4	4	4	4
Margaretting CE Primary, Stock CE Primary										

Number on Roll (NOR)

Year	NOR
23/24	279
24/25	290
25/26	287
26/27	279
27/28	271

Project Pipeline

School	Year	Description	Places
No expansion projects currently in pipeline			

10. Chelmsford Central

Current PAN: 480
Current Capacity: 3,583

Reception Place Forecast

Year	23/24	24/25	25/26	26/27	27/28	28/29	29/30	30/31	31/32	32/33
+/-	56	58	23	14	5	-1	-6	-11	-13	-15
Kings Road Primary, Maltese Road Primary, Meadgate Primary, Moulsham Infant, Moulsham Junior, Oaklands Infant, Our Lady Immaculate Catholic Primary, The Cathedral CE Primary, Trinity Road Primary, Westlands Primary										

Number on Roll (NOR)

Year	NOR
23/24	3,347
24/25	3,306
25/26	3,298
26/27	3,309
27/28	3,327

Project Pipeline

School	Year	Description	Places
Trinity Road Primary	24/25	½ form entry expansion	15/105

11. Boreham (not grouped)

Current PAN: 30
 Current Capacity: 236

Reception Place Forecast

Year	23/24	24/25	25/26	26/27	27/28	28/29	29/30	30/31	31/32	32/33
+/-	-1	2	3	3	3	3	3	3	3	2
Boreham Primary										

Number on Roll (NOR)

Year	NOR
23/24	217
24/25	213
25/26	212
26/27	206
27/28	202

Project Pipeline

School	Year	Description	Places
No expansion projects currently in pipeline			

12. Downham (not grouped)

Current PAN: 30
 Current Capacity: 234

Reception Place Forecast

Year	23/24	24/25	25/26	26/27	27/28	28/29	29/30	30/31	31/32	32/33
+/-	2	1	2	2	2	2	2	1	1	1
Downham Primary										

Number on Roll (NOR)

Year	NOR
23/24	213
24/25	210
25/26	209
26/27	204
27/28	200

Project Pipeline

School	Year	Description	Places
No expansion projects currently in pipeline			

Secondary School Planning Groups

1. Chelmsford

Current PAN: 2,042
Current Capacity: 12,887

Year 7 Place Forecast

Year	23/24	24/25	25/26	26/27	27/28	28/29	29/30	30/31	31/32	32/33
+/-	33	46	80	42	31	101	82	238	327	173

The Boswells School, Beaulieu Park School, Chelmer Valley High School, Chelmsford County High, Great Baddow High School, Hylands School, King Edward VI, Moulsham High School, The Sandon School, St John Payne Catholic School

Number on Roll (NOR)

Year	NOR
23/24	12,283
24/25	12,431
25/26	12,540
26/27	12,564
27/28	12,585

Project Pipeline

School	Year	Description	Places
No expansion projects currently in pipeline			

Beaulieu Park School was built with additional capacity to enable it to expand when required, as the Beaulieu housing development grows and local demand increases.

2. Woodham / Burnham (Chelmsford and Maldon)

Current PAN: 405
Current Capacity: 2,625

Year 7 Place Forecast

Year	23/24	24/25	25/26	26/27	27/28	28/29	29/30	30/31	31/32	32/33
+/-	-65	-45	-57	-40	-33	-43	-56	-6	21	-20

William De Ferrers School, Ormiston Rivers Academy

Number on Roll (NOR)

Year	NOR
23/24	2,530
24/25	2,588
25/26	2,653
26/27	2,652
27/28	2,656

Project Pipeline

School	Year	Description	Places
Ormiston Rivers	23/24	1 form entry expansion	30/150
William De Ferrers	23/24	Increasing PAN within existing accommodation	30/0

3.1.3 Maldon

Primary School Planning Groups

1. Tollesbury / Tollshunt D'Arcy

Current PAN: 45
Current Capacity: 435

Reception Place Forecast

Year	23/24	24/25	25/26	26/27	27/28	28/29	29/30	30/31	31/32	32/33
+/-	10	13	6	6	5	5	5	5	5	4

Tollesbury Primary, Tolleshunt D'Arcy St Nicholas CE Primary

Number on Roll (NOR)

Year	NOR
23/24	305
24/25	289
25/26	280
26/27	278
27/28	283

Project Pipeline

School	Year	Description	Places
No expansion projects currently in pipeline			

2. Maldon / Heybridge

Current PAN: 302
Current Capacity: 2,256

Reception Place Forecast

Year	23/24	24/25	25/26	26/27	27/28	28/29	29/30	30/31	31/32	32/33
+/-	13	18	-3	-15	-29	-33	-39	-45	-48	-51

All Saints CE Primary, Great Totham Primary, Heybridge Primary, Maldon Primary, St Francis Catholic Primary, Wentworth Primary, Woodham Walter CE Primary

Number on Roll (NOR)

Year	NOR
23/24	2,150
24/25	2,161
25/26	2,208
26/27	2,275
27/28	2,322

Project Pipeline

School	Year	Description	Places
New Primary School – Limebrook Way	24/25	2 form entry new primary school (will open with PAN of 30)	60/420
New Primary School - Heybridge	32/33	2 form entry new primary school (will open with PAN of 30)	60/240

3. Burnham / Southminster

Current PAN: 135

Current Capacity: 945

Reception Place Forecast

Year	23/24	24/25	25/26	26/27	27/28	28/29	29/30	30/31	31/32	32/33
+/-	14	16	6	5	2	3	2	2	1	1
Burnham-on-Crouch Primary, Southminster CE Primary, St Mary's CE Primary										

Number on Roll (NOR)

Year	NOR
23/24	947
24/25	952
25/26	956
26/27	954
27/28	941

Project Pipeline

School	Year	Description	Places
No expansion projects currently in pipeline			

Demand for places within this group will be closely monitored to ensure sufficient capacity in the area

4. Maylandsea / Purleigh / Latchingdon / Cold Norton

Current PAN: 106

Current Capacity: 842

Reception Place Forecast

Year	23/24	24/25	25/26	26/27	27/28	28/29	29/30	30/31	31/32	32/33
+/-	-3	22	5	4	2	3	2	2	2	1
Cold Norton Primary, Latchingdon CE Primary, Maylandsea Primary, Purleigh Primary										

Number on Roll (NOR)

Year	NOR
23/24	747
24/25	728
25/26	720
26/27	709
27/28	711

Project Pipeline

School	Year	Description	Places
No expansion projects currently in pipeline			

Demand for places within this group will be closely monitored to ensure sufficient capacity in the area.

5. Bradwell / Tillingham

Current PAN: 51

Current Capacity: 336

Reception Place Forecast

Year	23/24	24/25	25/26	26/27	27/28	28/29	29/30	30/31	31/32	32/33
+/-	25	27	22	21	21	21	21	21	21	20
St Cedd's CE Primary, St Nicholas CE Primary										

Number on Roll (NOR)

Year	NOR
23/24	253
24/25	234
25/26	223
26/27	218
27/28	214

Project Pipeline

School	Year	Description	Places
No expansion projects currently in pipeline			

Secondary School Planning Groups

South Woodham Ferrers / Burnham (see Chelmsford)

1. Maldon (not grouped)

Current PAN: 295

Current Capacity: 1,841

Year 7 Place Forecast

Year	23/24	24/25	25/26	26/27	27/28	28/29	29/30	30/31	31/32	32/33
+/-	-13	-15	-17	6	-41	-34	-25	-24	2	-23
The Plume School										

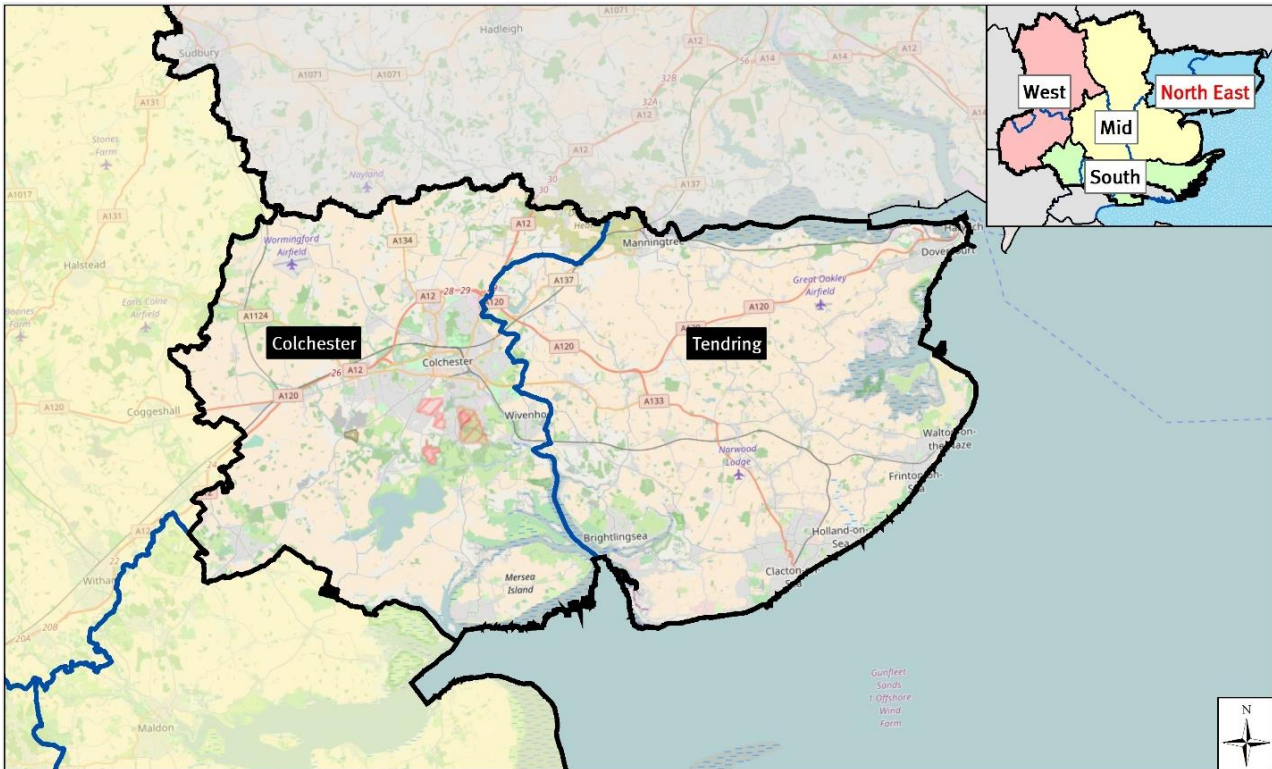
Number on Roll (NOR)

Year	NOR
23/24	1,777
24/25	1,801
25/26	1,817
26/27	1,814
27/28	1,852

Project Pipeline

School	Year	Description	Places
The Plume School	24/25	2 form entry expansion	60/300

3.2 North East Essex



For the purposes of school organisation and place planning North East Essex is Colchester City and Tendring District. Both authorities have adopted Local Development Plans which include a large new Garden Community on the Colchester / Tendring border.

3.2.1 Colchester

Primary School Planning Groups

1. Colchester north

Current PAN: 585

Current Capacity: 4,081

Reception Place Forecast

Year	23/24	24/25	25/26	26/27	27/28	28/29	29/30	30/31	31/32	32/33
+/-	67	53	35	19	4	-7	-11	-13	-16	-18

The Bishop William Ward CE Primary, Braiswick Primary, Brinkley Grove Primary, Camulos Primary, Friars Grove Primary, Heathlands CE Primary, Highwoods Primary, Myland Primary, North Primary, Queen Boudica Primary, St John's CE Primary

Number on Roll (NOR)

Year	NOR
23/24	4,051
24/25	4,079
25/26	4,074
26/27	4,099
27/28	4,112

Project Pipeline

School	Year	Description	Places
Trinity School	25/26	2 form entry primary provision	60/420

Trinity School is an all-through free school. It opened to admit pupils into Year 7 in 2021 and will expand to admit primary age pupils into Reception in line with local demand.

2. Colchester rural northwest

Current PAN: 94

Current Capacity: 661

Reception Place Forecast

Year	23/24	24/25	25/26	26/27	27/28	28/29	29/30	30/31	31/32	32/33
+/-	11	10	9	7	5	4	3	3	2	2

Chappel CE Primary, Fordham All Saints CE Primary, Great Tey CE Primary, Holy Trinity CE Primary, St Andrew's CE Primary

Number on Roll (NOR)

Year	NOR
23/24	522
24/25	545
25/26	545
26/27	561
27/28	582

Project Pipeline

School	Year	Description	Places
No expansion projects currently in pipeline			

3. Tiptree

Current PAN: 117

Current Capacity: 954

Reception Place Forecast

Year	23/24	24/25	25/26	26/27	27/28	28/29	29/30	30/31	31/32	32/33
+/-	0	11	-1	-2	-3	-4	-5	-6	-6	-7

Baynards Primary, Messing Primary, Milldene Primary, Tiptree Heath Primary, St Luke's CE Primary

Number on Roll (NOR)

Year	NOR
23/24	847
24/25	852
25/26	862
26/27	857
27/28	846

Project Pipeline

School	Year	Description	Places
No expansion projects currently in pipeline			

St Luke's CE Primary School's PAN has been reduced from 45 to 30 recently and it may be possible to reverse this change to meet the expected deficit of places.

4. Colchester rural southwest

Current PAN: 50

Current Capacity: 350

Reception Place Forecast

Year	23/24	24/25	25/26	26/27	27/28	28/29	29/30	30/31	31/32	32/33
+/-	14	13	12	11	10	9	9	8	8	8

Birch CE Primary, Layer-De-La-Haye CE Primary

Number on Roll (NOR)

Year	NOR
23/24	329
24/25	316
25/26	300
26/27	286
27/28	287

Project Pipeline

School	Year	Description	Places
No expansion projects currently in pipeline			

5. Colchester southwest and Stanway

Current PAN: 480

Current Capacity: 3,636

Reception Place Forecast

Year	23/24	24/25	25/26	26/27	27/28	28/29	29/30	30/31	31/32	32/33
+/-	98	100	86	74	59	46	36	28	22	18
Copford CE Primary, Gosbecks Primary, Hamilton Primary, Home Farm Primary, Lakelands Primary, Lexden Primary, Prettygate Infant, Prettygate Junior, St Teresa's Catholic Primary, Stanway Fiveways Primary, Stanway Primary										

Number on Roll (NOR)

Year	NOR
23/24	3133
24/25	3073
25/26	3024
26/27	3021
27/28	3018

Project Pipeline

School	Year	Description	Places
No expansion projects currently in pipeline			

Although forecasts indicate there will be a significant surplus of places in the Reception cohort for the next two or three years we expect these cohorts to increase in size, as they move through primary school, due to additional housing being built in the area. This pattern of inward migration has been seen in the area over previous years. Published Admission Numbers may be reduced temporarily to avoid destabilizing levels of surplus capacity.

6. Colchester east

Current PAN: 210

Current Capacity: 1,470

Reception Place Forecast

Year	23/24	24/25	25/26	26/27	27/28	28/29	29/30	30/31	31/32	32/33
+/-	63	58	49	45	39	34	27	21	15	9
Hazelmere Infant, Hazelmere Junior, Parsons Heath CE Primary, Roach Vale Primary, Unity Primary, Willow Brook Primary										

Number on Roll (NOR)

Year	NOR
23/24	1,190
24/25	1,177
25/26	1,158
26/27	1,167
27/28	1,180

Project Pipeline

School	Year	Description	Places
No expansion projects currently in pipeline			

7. Wivenhoe

Current PAN: 90
Current Capacity: 653

Reception Place Forecast

Year	23/24	24/25	25/26	26/27	27/28	28/29	29/30	30/31	31/32	32/33
+/-	24	18	22	20	16	13	11	10	10	10
Broomgrove Infant, Broomgrove Junior, Millfields Primary										

Number on Roll (NOR)

Year	NOR
23/24	597
24/25	555
25/26	533
26/27	526
27/28	533

Project Pipeline

School	Year	Description	Places
No expansion projects currently in pipeline			

8. Colchester south and southeast

Current PAN: 600
Current Capacity: 4,592

Reception Place Forecast

Year	23/24	24/25	25/26	26/27	27/28	28/29	29/30	30/31	31/32	32/33
+/-	73	79	66	57	43	32	20	8	-3	-11
Cherry Tree Primary, Icen Primary, Kendall CE Primary, King's Ford Infant, Monkwick Infant, Monkwick Junior, Montgomery Infant, Montgomery Junior, Old Heath Primary, St George's School, St James' CE Primary, St John's Green Primary, St Michael's CE Primary, St Thomas More's Catholic Primary										

Number on Roll (NOR)

Year	NOR
23/24	3,947
24/25	3,934
25/26	3,872
26/27	3,855
27/28	3,855

Project Pipeline

School	Year	Description	Places
No expansion projects currently in pipeline			

9. Colchester rural south

Current PAN: 67
Current Capacity: 481

Reception Place Forecast

Year	23/24	24/25	25/26	26/27	27/28	28/29	29/30	30/31	31/32	32/33
+/-	1	9	3	2	0	-2	-3	-3	-3	-4
Fingringhoe Primary, Langenhoe Primary, St Lawrence CE Primary										

Number on Roll (NOR)

Year	NOR
23/24	451
24/25	444
25/26	444
26/27	437
27/28	451

Project Pipeline

School	Year	Description	Places
No expansion projects currently in pipeline			

10. Colchester rural northeast

Current PAN: 76
Current Capacity: 531

Reception Place Forecast

Year	23/24	24/25	25/26	26/27	27/28	28/29	29/30	30/31	31/32	32/33
+/-	22	16	13	12	11	10	9	9	9	8
Boxted St Peter's CE Primary, Dedham CE Primary, Langham Primary										

Number on Roll (NOR)

Year	NOR
23/24	499
24/25	492
25/26	487
26/27	478
27/28	465

Project Pipeline

School	Year	Description	Places
No expansion projects currently in pipeline			

11. Mersea (not grouped)

Current PAN: 60
 Current Capacity: 450

Reception Place Forecast

Year	23/24	24/25	25/26	26/27	27/28	28/29	29/30	30/31	31/32	32/33
+/-	20	11	13	11	9	8	7	7	7	7
Mersea Island Primary										

Number on Roll (NOR)

Year	NOR
23/24	348
24/25	358
25/26	351
26/27	342
27/28	363

Project Pipeline

School	Year	Description	Places
No expansion projects currently in pipeline			

Secondary School Planning Groups

1. Colchester

Current PAN: 2,238

Current Capacity: 12,090

Year 7 Place Forecast

Year	23/24	24/25	25/26	26/27	27/28	28/29	29/30	30/31	31/32	32/33
+/-	-45	31	-29	11	33	24	101	171	155	98

Colchester Academy, Colchester County High School, Colchester Royal Grammar School, Paxman Academy, The Gilbert School, Philip Morant School, St Benedict's Catholic College, St Helena School, The Stanway School, The Thomas Lord Audley School, The Trinity School

Number on Roll (NOR)

Year	NOR
23/24	12,125
24/25	12,351
25/26	12,520
26/27	12,583
27/28	12,563

Project Pipeline

School	Year	Description	Places
Trinity School	23/24	2 form entry expansion	60/660

Trinity School has initially operated with an intake into Year 7 of 4FE, which will increase to 6FE when it moves to its new accommodation in September 2023. The building project is being managed by the DfE.

2. Thurstable (not grouped)

Current PAN: 210

Current Capacity: 1,275

Year 7 Place Forecast

Year	23/24	24/25	25/26	26/27	27/28	28/29	29/30	30/31	31/32	32/33
+/-	-14	-9	11	-7	19	12	-5	34	45	23

Thurstable School

Number on Roll (NOR)

Year	NOR
23/24	1,240
24/25	1,254
25/26	1,241
26/27	1,239
27/28	1,214

Project Pipeline

School	Year	Description	Places
No expansion projects currently in pipeline			

Forecast deficits can be managed within the school's existing accommodation.

3.2.2 Tendring

Primary School Planning Groups

1. Little Clacton / Tendring / Thorpe / Weeley

Current PAN: 118

Current Capacity: 822

Reception Place Forecast

Year	23/24	24/25	25/26	26/27	27/28	28/29	29/30	30/31	31/32	32/33
+/-	14	17	4	0	-4	-8	-12	-17	-20	-23

Engaines Primary, Rolph CE Primary, Tendring Primary, Weeley St Andrew's CE Primary

Number on Roll (NOR)

Year	NOR
23/24	891
24/25	890
25/26	882
26/27	887
27/28	884

Project Pipeline

School	Year	Description	Places
Tendring Primary	23/24	Small expansion	10/70

Land is allocated in Tendring's emerging Local Plan for a new school at 'Oakwood Park' which is in Engaines Primary School's priority admission area. Housing development will be monitored to determine when a new school is required.

2. Clacton

Current PAN: 630

Current Capacity: 4,600

Reception Place Forecast

Year	23/24	24/25	25/26	26/27	27/28	28/29	29/30	30/31	31/32	32/33
+/-	111	125	94	85	79	72	66	60	54	48

Alton Park Junior, Burrsville Infant, Cann Hall Primary, Sir Martin Frobisher Academy, Great Clacton CE Junior, Holland Haven Primary, Holland Park Primary, The Oakwood Infant, Ravens Primary, St Clare's Catholic Primary, St Osyth CE Primary, White Hall Primary

Number on Roll (NOR)

Year	NOR
23/24	4,035
24/25	3,968
25/26	3,911
26/27	3,893
27/28	3,892

Project Pipeline

School	Year	Description	Places
No expansion projects currently in pipeline			

There is a significant amount of new housing planned for Clacton. Sites for new primary schools will be secured through S106 agreements as major housing developments progress and demand for primary school places increases. This will enable the opening of new schools when needed.

3. Brightlingsea / Elmstead

Current PAN: 197

Current Capacity: 1,436

Reception Place Forecast

Year	23/24	24/25	25/26	26/27	27/28	28/29	29/30	30/31	31/32	32/33
+/-	16	5	2	-6	-13	-20	-26	-31	-36	-41

Alresford Primary, Brightlingsea Primary, Elmstead Primary, Great Bentley Primary, St George's CE Primary

Number on Roll (NOR)

Year	NOR
23/24	1,470
24/25	1,457
25/26	1,449
26/27	1,474
27/28	1,504

Project Pipeline

School	Year	Description	Places
Great Bentley Primary	24/25	1 form entry expansion	30/210

4. Frinton / Walton

Current PAN: 150

Current Capacity: 1,066

Reception Place Forecast

Year	23/24	24/25	25/26	26/27	27/28	28/29	29/30	30/31	31/32	32/33
+/-	23	31	15	11	8	7	7	6	6	5

Frinton-on-Sea Primary, Hamford Primary, Kirby Primary, Walton-on-the-Naze Primary

Number on Roll (NOR)

Year	NOR
23/24	1,009
24/25	1,017
25/26	1,007
26/27	1,017
27/28	1,021

Project Pipeline

School	Year	Description	Places
No current expansion plans in pipeline			

The expansion of Hamford Primary has created some capacity in the group in the short to medium term, which is essential for families moving into the new housing in the area. Options for the longer term have been assessed and pupil numbers will be monitored carefully to ensure that additional places are provided if necessary.

5. Harwich

Current PAN: 277

Current Capacity: 1,951

Reception Place Forecast

Year	23/24	24/25	25/26	26/27	27/28	28/29	29/30	30/31	31/32	32/33
+/-	60	37	44	39	34	32	29	26	24	22

All Saints CE Primary (Dovercourt), Chase Lane Primary, Harwich Primary, The Mayflower Primary, Spring Meadow Primary, St Joseph's Catholic Primary, Two Village CE Primary

Number on Roll (NOR)

Year	NOR
23/24	1,744
24/25	1,720
25/26	1,695
26/27	1,688
27/28	1,682

Project Pipeline

School	Year	Description	Places
No expansion projects currently in pipeline			

6. Manningtree and surrounds

Current PAN: 140

Current Capacity: 945

Reception Place Forecast

Year	23/24	24/25	25/26	26/27	27/28	28/29	29/30	30/31	31/32	32/33
+/-	34	21	17	13	10	7	5	2	-2	-4

Ardleigh St Mary's CE Primary, Highfields Primary, Lawford CE Primary, Mistley Norman CE Primary

Number on Roll (NOR)

Year	NOR
23/24	785
24/25	821
25/26	859
26/27	886
27/28	915

Project Pipeline

School	Year	Description	Places
No expansion projects currently in pipeline			

7. Tendring rural north

Current PAN: 54
Current Capacity: 341

Reception Place Forecast

Year	23/24	24/25	25/26	26/27	27/28	28/29	29/30	30/31	31/32	32/33
+/-	17	15	15	15	15	15	15	14	14	14
All Saints CE Primary (Gt Oakley), Bradfield Primary, Wix & Wrabness										

Number on Roll (NOR)

Year	NOR
23/24	322
24/25	316
25/26	313
26/27	300
27/28	292

Project Pipeline

School	Year	Description	Places
No expansion projects currently in pipeline			

Secondary School Planning Groups

1. Clacton

Current PAN: 936

Current Capacity: 5,710

Year 7 Place Forecast

Year	23/24	24/25	25/26	26/27	27/28	28/29	29/30	30/31	31/32	32/33
+/-	2	89	43	107	112	109	102	157	185	131
Clacton Coastal Academy, Clacton County High School, Tendring Technology College										

Number on Roll (NOR)

Year	NOR
23/24	5,256
24/25	5,284
25/26	5,327
26/27	5,265
27/28	5,168

Project Pipeline

School	Year	Description	Places
No expansion projects currently in pipeline			

2. Colne (not grouped)

Current PAN: 276

Current Capacity: 1,788

Year 7 Place Forecast

Year	23/24	24/25	25/26	26/27	27/28	28/29	29/30	30/31	31/32	32/33
+/-	20	20	26	51	52	28	73	76	71	71
Colne Community School & College										

Number on Roll (NOR)

Year	NOR
23/24	1,318
24/25	1,373
25/26	1,428
26/27	1,453
27/28	1,433

Project Pipeline

School	Year	Description	Places
No expansion projects currently in pipeline			

3. Harwich (not grouped)

Current PAN: 224

Current Capacity: 1,433

Year 7 Place Forecast

Year	23/24	24/25	25/26	26/27	27/28	28/29	29/30	30/31	31/32	32/33
+/-	14	-17	-10	-9	-15	8	14	24	4	11
Harwich and Dovercourt High School										

Number on Roll (NOR)

Year	NOR
23/24	1,182
24/25	1,209
25/26	1,223
26/27	1,254
27/28	1,268

Project Pipeline

School	Year	Description	Places
No expansion projects currently in pipeline			

The school recently reduced its PAN to match lower local demand for places. Should there be a need to admit additional local children, the school would be able to do so within its existing accommodation.

4. Manningtree (not grouped)

Current PAN: 190

Current Capacity: 1,020

Year 7 Place Forecast

Year	23/24	24/25	25/26	26/27	27/28	28/29	29/30	30/31	31/32	32/33
+/-	-6	15	7	6	12	3	5	17	9	4
Manningtree High School										

Number on Roll (NOR)

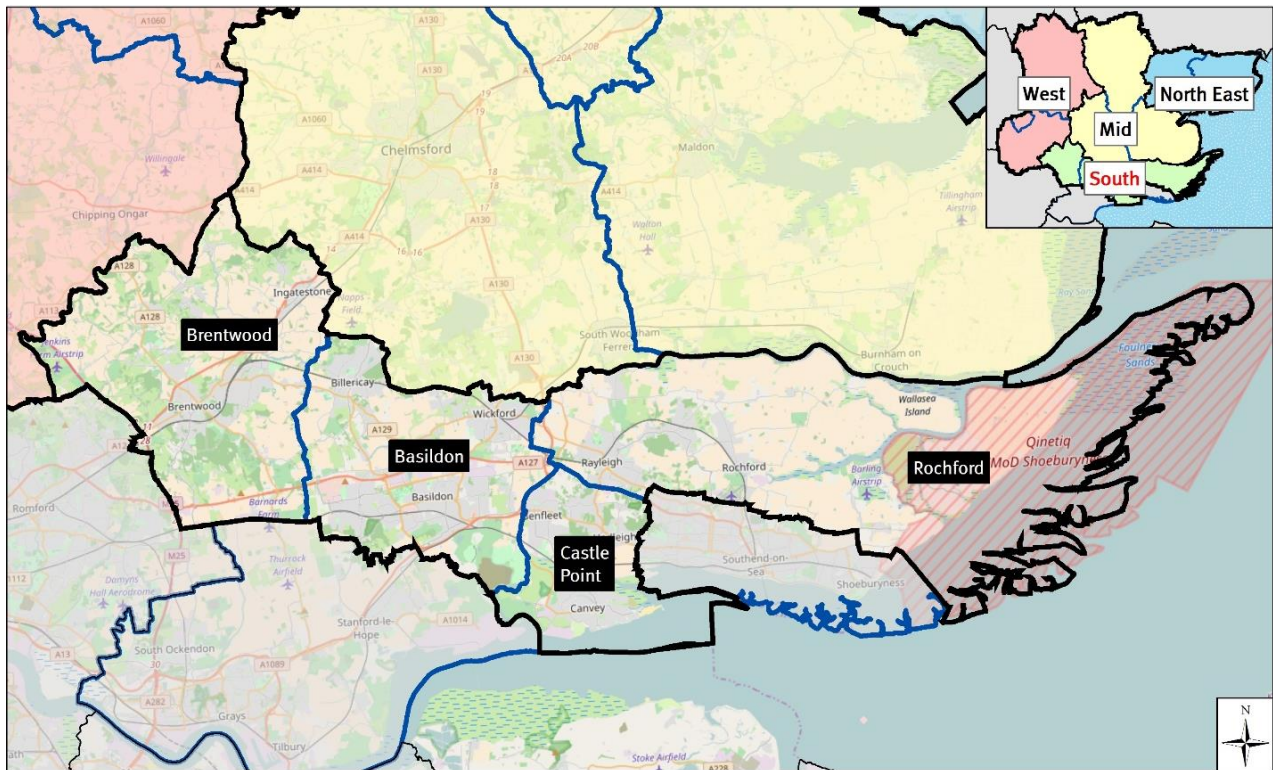
Year	NOR
23/24	945
24/25	954
25/26	953
26/27	961
27/28	940

Project Pipeline

School	Year	Description	Places
No expansion projects currently in pipeline			

An expansion project was completed at Manningtree High in summer 2020 which increased the capacity of the school to ensure that local children can be accommodated.

3.3 South Essex



For the purposes of school organisation and place planning South Essex is Basildon, Brentwood, Castle Point and Rochford districts and boroughs. Only Brentwood has an adopted Local Development Plan and it has started a review. Castle Point had progressed a Plan to examination but later withdrew it. Whilst the level of development indicated in our forecasts is still likely, the precise sites that will deliver growth are less certain.

The demand for school places in this quadrant is influenced considerably by cross-border pupil movement as it borders Greater London, Southend, and Thurrock authorities.

3.3.1 Basildon

Primary School Planning Groups

1. Billericay

Current PAN: 450

Current Capacity: 3,201

Reception Place Forecast

Year	23/24	24/25	25/26	26/27	27/28	28/29	29/30	30/31	31/32	32/33
+/-	17	68	39	41	40	39	39	38	38	37
Brightside Primary, Buttsbury Infant, Buttsbury Junior, Quilters Infant, Quilters Junior, South Green Infant, South Green Junior School, St Peter's Catholic Primary, Sunnymede Infant, Sunnymede Junior										

Number on Roll (NOR)

Year	NOR
23/24	3,080
24/25	3,013
25/26	2,999
26/27	2,964
27/28	2,909

Project Pipeline

School	Year	Description	Places
No expansion projects currently in pipeline			

2. Wickford / Runwell

Current PAN: 435

Current Capacity: 3,124

Reception Place Forecast

Year	23/24	24/25	25/26	26/27	27/28	28/29	29/30	30/31	31/32	32/33
+/-	30	55	41	41	37	32	29	24	22	21
Abacus Primary, Grange Primary, Hilltop Infant, Hilltop Junior, North Crescent Primary, Oakfield Primary, Runwell Primary, The Wickford CE Infant, Wickford Primary										

Number on Roll (NOR)

Year	NOR
23/24	2,901
24/25	2,886
25/26	2,873
26/27	2,854
27/28	2,839

Project Pipeline

School	Year	Description	Places
No expansion projects currently in pipeline			

3. Basildon central and west

Current PAN: 1,395

Current Capacity: 9,755

Reception Place Forecast

Year	23/24	24/25	25/26	26/27	27/28	28/29	29/30	30/31	31/32	32/33
+/-	69	100	52	48	36	27	18	11	5	0
Bardfield Primary, Cherry Tree Primary, Fairhouse Primary, Ghyllgrove Primary, Great Berry Primary, Greensted Infant, Greensted Junior, Janet Duke Primary, Kingswood Primary, Laindon Park Primary, Lee Chapel Primary, Lincewood Primary, Merrylands Primary, Millhouse Primary, Noak Bridge Primary, Phoenix Primary, Ryedene Primary, St Anne Line Catholic Infant, St Anne Line Catholic Junior, St Teresa's Catholic Primary, Vange Primary, Whitmore Primary, Willows Primary										

Number on Roll (NOR)

Year	NOR
23/24	9,498
24/25	9,603
25/26	9,676
26/27	9,687
27/28	9,681

Project Pipeline

School	Year	Description	Places
New Primary School, Dry Street	24/25	2 form entry new primary school at Dry Street (will open with PAN of 30)	30/420
Expansion of New Primary	26/27	1 form entry expansion.	30/0

5. Basildon east

Current PAN: 330

Current Capacity: 2,310

Reception Place Forecast

Year	23/24	24/25	25/26	26/27	27/28	28/29	29/30	30/31	31/32	32/33
+/-	32	65	41	42	42	41	41	40	40	40
Briscoe Primary, Eversley Primary, Felmore Primary, Northlands Primary, Maple Grove Primary, St Margaret's CE Primary										

Number on Roll (NOR)

Year	NOR
23/24	2,192
24/25	2,160
25/26	2,134
26/27	2,097
27/28	2,051

Project Pipeline

School	Year	Description	Places
No expansion projects currently in pipeline			

6. Crays Hill (not grouped)

Current PAN: 15

Current Capacity: 105

Reception Place Forecast

Year	23/24	24/25	25/26	26/27	27/28	28/29	29/30	30/31	31/32	32/33
+/-	-1	4	-1	-1	-1	-1	-1	-1	-1	-1
Crays Hill Primary										

Number on Roll (NOR)

Year	NOR
23/24	97
24/25	93
25/26	94
26/27	95
27/28	103

Project Pipeline

School	Year	Description	Places
No expansion projects currently in pipeline			

Pupil growth at Crays Hill Primary is driven by an increase in the number of existing pupils from the wider Basildon area attending the school rather than an increase in local demand. Forecasts will be monitored closely to ensure any local demand is addressed.

Secondary School Planning Groups

1. Basildon

Current PAN: 1,110

Current Capacity: 5,900

Year 7 Place Forecast

Year	23/24	24/25	25/26	26/27	27/28	28/29	29/30	30/31	31/32	32/33
+/-	-13	-12	3	4	-68	-8	-3	-30	26	-30
Basildon Lower Academy, Basildon Upper Academy, De La Salle School, The James Hornsby School, Woodlands School										

Number on Roll (NOR)

Year	NOR
23/24	5,259
24/25	5,498
25/26	5,663
26/27	5,754
27/28	5,988

Project Pipeline

School	Year	Description	Places
tbc	27/28	1 form entry expansion	30/150

2. Billericay

Current PAN: 550

Current Capacity: 3,293

Year 7 Place Forecast

Year	23/24	24/25	25/26	26/27	27/28	28/29	29/30	30/31	31/32	32/33
+/-	-15	-15	38	20	-7	-7	53	10	62	41
The Billericay School, Mayflower High School										

Number on Roll (NOR)

Year	NOR
23/24	3,450
24/25	3,473
25/26	3,438
26/27	3,422
27/28	3,426

Project Pipeline

School	Year	Description	Places
No expansion projects currently in pipeline			

3. Wickford

Current PAN: 464

Current Capacity: 2,713

Year 7 Place Forecast

Year	23/24	24/25	25/26	26/27	27/28	28/29	29/30	30/31	31/32	32/33
+/-	-22	-12	-44	-41	-49	-40	-13	-28	-15	-23
Beauchamps High School, The Bromfords School										

Number on Roll (NOR)

Year	NOR
23/24	2,701
24/25	2,734
25/26	2,774
26/27	2,820
27/28	2,869

Project Pipeline

School	Year	Description	Places
Beauchamps High School	24/25	1 form entry expansion	30/150

3.3.2 Brentwood

Primary School Planning Groups

1. Brentwood Town

Current PAN: 738

Current Capacity: 5,122

Reception Place Forecast

Year	23/24	24/25	25/26	26/27	27/28	28/29	29/30	30/31	31/32	32/33
+/-	72	38	43	32	26	23	19	16	14	16
Bentley St Paul's CE Primary, Hogarth Primary, Holly Trees Primary, Hutton All Saints' CE Primary , Ingrave Johnstone CE Primary, Larchwood Primary, Long Ridings Primary, St Helen's Catholic Junior, St Helen's Catholic Infant , St Joseph the Worker Catholic Primary, St Mary's CE Primary, St Peter's CE Primary, St Thomas of Canterbury CE Infant, St Thomas of Canterbury CE Junior, Warley Primary, Willowbrook Primary										

Number on Roll (NOR)

Year	NOR
23/24	4,781
24/25	4,862
25/26	4,948
26/27	4,989
27/28	5,023

Project Pipeline

School	Year	Description	Places
No expansion projects currently in pipeline			

A new primary school is expected to be required in Shenfield when new housing build rates increase in that area. A potential school site is included in Brentwood's emerging Local Plan.

2. Ingatestone / Mountnessing

Current PAN: 75

Current Capacity: 525

Reception Place Forecast

Year	23/24	24/25	25/26	26/27	27/28	28/29	29/30	30/31	31/32	32/33
+/-	20	12	9	8	9	9	9	9	9	9
Ingatestone CE Infant, Ingatestone Junior, Mountnessing CE Primary										

Number on Roll (NOR)

Year	NOR
23/24	465
24/25	473
25/26	497
26/27	498
27/28	480

Project Pipeline

School	Year	Description	Places
No expansion projects currently in pipeline			

3. Doddinghurst / Kelvedon Hatch

Current PAN: 115

Current Capacity: 810

Reception Place Forecast

Year	23/24	24/25	25/26	26/27	27/28	28/29	29/30	30/31	31/32	32/33
+/-	38	30	28	28	28	28	28	29	29	29
Blackmore Primary, Doddinghurst Infant, Doddinghurst CE Junior, Kelvedon Hatch Primary										

Number on Roll (NOR)

Year	NOR
23/24	680
24/25	682
25/26	678
26/27	649
27/28	638

Project Pipeline

School	Year	Description	Places
No expansion projects currently in pipeline			

4. West Horndon (not grouped)

Current PAN: 30

Current Capacity: 210

Reception Place Forecast

Year	23/24	24/25	25/26	26/27	27/28	28/29	29/30	30/31	31/32	32/33
+/-	9	9	8	1	-10	-22	-34	-46	-58	-69
West Horndon Primary										

Number on Roll (NOR)

Year	NOR
23/24	170
24/25	169
25/26	174
26/27	223
27/28	291

Project Pipeline

School	Year	Description	Places
New Primary School	27/28	2 form entry new primary school	60/420

The medium to long term increase in demand for primary school places will result from a planned new Garden Community (Dunton Village), for which new schools will be provided.

Secondary School Planning Groups

1. Brentwood

Current PAN: 1,067

Current Capacity: 6,711

Year 7 Place Forecast

Year	23/24	24/25	25/26	26/27	27/28	28/29	29/30	30/31	31/32	32/33
+/-	35	33	37	20	27	43	62	87	41	51
Becket Keys CE Free School, Brentwood County High School, Brentwood Ursuline Convent High School, Shenfield High School, St Martin's School										

Number on Roll (NOR)

Year	NOR
23/24	6,549
24/25	6,634
25/26	6,727
26/27	6,769
27/28	6,806

Project Pipeline

School	Year	Description	Places
No expansion projects currently in pipeline			

2. Anglo European (not grouped)

Current PAN: 224

Current Capacity: 1,460

Year 7 Place Forecast

Year	23/24	24/25	25/26	26/27	27/28	28/29	29/30	30/31	31/32	32/33
+/-	5	17	-4	-6	12	26	9	26	23	18
Anglo European School										

Number on Roll (NOR)

Year	NOR
23/24	1,473
24/25	1,464
25/26	1,471
26/27	1,463
27/28	1,434

Project Pipeline

School	Year	Description	Places
No expansion projects currently in pipeline			

3.3.3 Castle Point

Primary School Planning Groups

1. Canvey Island

Current PAN: 450

Current Capacity: 3,167

Reception Place Forecast

Year	23/24	24/25	25/26	26/27	27/28	28/29	29/30	30/31	31/32	32/33
+/-	87	115	96	95	94	88	82	78	76	75

Canvey Island Infant, Canvey Junior, Leigh Beck Infant, Leigh Beck Junior, Lubbins Park Primary, Northwick Park Primary, St Joseph's Catholic Primary, St Katherine's CE Primary, William Read Primary, Winter Gardens Primary

Number on Roll (NOR)

Year	NOR
23/24	2,710
24/25	2,633
25/26	2,602
26/27	2,569
27/28	2,545

Project Pipeline

School	Year	Description	Places
No expansion projects currently in pipeline			

2. Thundersley / Benfleet

Current PAN: 420

Current Capacity: 2,913

Reception Place Forecast

Year	23/24	24/25	25/26	26/27	27/28	28/29	29/30	30/31	31/32	32/33
+/-	58	30	18	9	0	-10	-18	-26	-33	-37

Kingston Primary, Montgomerie Primary, Robert Drake Primary, Thundersley Primary, Woodham Ley Primary, Holy Family Primary, Jotmans Hall Primary, Kents Hill Infant, Kents Hill Junior, South Benfleet Primary

Number on Roll (NOR)

Year	NOR
23/24	2,801
24/25	2,841
25/26	2,855
26/27	2,902
27/28	2,937

Project Pipeline

School	Year	Description	Places
No expansion projects currently in pipeline			

The deficit of places forecast is linked to housing as part of the Local Plan which was recently withdrawn. Housing growth and its impact on our forecast demand for places will be monitored closely to determine if/when school expansion is required.

3. Hadleigh

Current PAN: 120

Current Capacity: 840

Reception Place Forecast

Year	23/24	24/25	25/26	26/27	27/28	28/29	29/30	30/31	31/32	32/33
+/-	4	1	-8	-12	-12	-13	-13	-13	-13	-13
Hadleigh Infant, Hadleigh Junior School, Westwood Primary										

Number on Roll (NOR)

Year	NOR
23/24	821
24/25	856
25/26	895
26/27	920
27/28	921

Project Pipeline

School	Year	Description	Places
tbc	25/26	½ form entry expansion	15/105

Mobility between Hadleigh and the Thundersley/Benfleet area is fluid and is constantly monitored to address local demand.

However a permanent capacity increase will be required to address the higher sustained growth in local demand. Increases in demand will be assessed in conjunction with Group 2.

Secondary School Planning Groups

1. Benfleet

Current PAN: 740

Current Capacity: 4,450

Year 7 Place Forecast

Year	23/24	24/25	25/26	26/27	27/28	28/29	29/30	30/31	31/32	32/33
+/-	39	38	7	17	23	44	28	83	65	43
The Appleton School, The Deanes, The King John School										

Number on Roll (NOR)

Year	NOR
23/24	4,205
24/25	4,212
25/26	4,254
26/27	4,283
27/28	4,272

Project Pipeline

School	Year	Description	Places
No expansion projects currently in pipeline			

2. Canvey Island

Current PAN: 420

Current Capacity: 2,100

Year 7 Place Forecast

Year	23/24	24/25	25/26	26/27	27/28	28/29	29/30	30/31	31/32	32/33
+/-	44	49	73	76	67	52	105	83	108	94
Castle View School, Cornelius Vermuyden										

Number on Roll (NOR)

Year	NOR
23/24	1,871
24/25	1,875
25/26	1,879
26/27	1,839
27/28	1,806

Project Pipeline

School	Year	Description	Places
No expansion projects currently in pipeline			

3.3.4 Rochford

Primary School Planning Groups

1. Rayleigh

Current PAN: 425

Current Capacity: 3,038

Reception Place Forecast

Year	23/24	24/25	25/26	26/27	27/28	28/29	29/30	30/31	31/32	32/33
+/-	71	64	41	36	35	29	25	20	18	16

Down Hall Primary, Edward Francis Primary, Glebe Primary, Grove Wood Primary, Our Lady of Ransom Catholic Primary, Rayleigh Primary, St Nicholas CE Primary, Wyburns Primary

Number on Roll (NOR)

Year	NOR
23/24	2,815
24/25	2,811
25/26	2,776
26/27	2,761
27/28	2,748

Project Pipeline

School	Year	Description	Places
No expansion projects currently in pipeline			

There is significant housing growth in the area, and options for school expansion will be explored.

2. Rochford

Current PAN: 180

Current Capacity: 1,241

Reception Place Forecast

Year	23/24	24/25	25/26	26/27	27/28	28/29	29/30	30/31	31/32	32/33
+/-	14	-2	3	-3	-8	-14	-21	-24	-25	-25

Holt Farm Infant, Holt Farm Junior, Rochford Primary, St Teresa's Catholic Primary, Stambridge Primary, Waterman Primary

Number on Roll (NOR)

Year	NOR
23/24	1,055
24/25	1,117
25/26	1,161
26/27	1,207
27/28	1,278

Project Pipeline

School	Year	Description	Places
tbc	26/27	½ form entry expansion	15/105

3. Hockley

Current PAN: 225

Current Capacity: 1,600

Reception Place Forecast

Year	23/24	24/25	25/26	26/27	27/28	28/29	29/30	30/31	31/32	32/33
+/-	34	18	25	22	22	20	18	16	15	14
Ashingdon Primary, Hockley Primary, Plumberow Primary, Westerings Primary										

Number on Roll (NOR)

Year	NOR
23/24	1,556
24/25	1,523
25/26	1,491
26/27	1,478
27/28	1,459

Project Pipeline

School	Year	Description	Places
No expansion projects currently in pipeline			

4. Barling / Gt Waking

Current PAN: 90

Current Capacity: 630

Reception Place Forecast

Year	23/24	24/25	25/26	26/27	27/28	28/29	29/30	30/31	31/32	32/33
+/-	12	17	10	9	9	8	8	8	7	7
Barling Magna Primary, Great Waking Primary										

Number on Roll (NOR)

Year	NOR
23/24	633
24/25	631
25/26	613
26/27	603
27/28	589

Project Pipeline

School	Year	Description	Places
No expansion projects currently in pipeline			

5. Canewdon (not grouped)

Current PAN: 22
 Current Capacity: 157

Reception Place Forecast

Year	23/24	24/25	25/26	26/27	27/28	28/29	29/30	30/31	31/32	32/33
+/-	4	4	6	6	6	6	6	6	6	6
Canewdon Endowed Primary										

Number on Roll (NOR)

Year	NOR
23/24	116
24/25	120
25/26	118
26/27	119
27/28	121

Project Pipeline

School	Year	Description	Places
No expansion projects currently in pipeline			

6. Riverside (not grouped)

Current PAN: 45
 Current Capacity: 420

Reception Place Forecast

Year	23/24	24/25	25/26	26/27	27/28	28/29	29/30	30/31	31/32	32/33
+/-	-5	-12	-15	-16	-16	-17	-17	-17	-17	-17
Riverside Primary										

Number on Roll (NOR)

Year	NOR
23/24	376
24/25	401
25/26	413
26/27	432
27/28	423

Project Pipeline

School	Year	Description	Places
Riverside Primary	23/24	½ form entry expansion	15/0

Secondary School Planning Groups

1. Rayleigh

Current PAN: 570
Current Capacity: 3,450

Year 7 Place Forecast

Year	23/24	24/25	25/26	26/27	27/28	28/29	29/30	30/31	31/32	32/33
+/-	74	86	49	110	109	121	74	129	131	106
The Fitzwimarc School, The Sweyne Park School										

Number on Roll (NOR)

Year	NOR
23/24	3,259
24/25	3,206
25/26	3,176
26/27	3,058
27/28	2,951

Project Pipeline

School	Year	Description	Places
No expansion projects currently in pipeline			

2. Rochford / Hockley

Current PAN: 540
Current Capacity: 3,280

Year 7 Place Forecast

Year	23/24	24/25	25/26	26/27	27/28	28/29	29/30	30/31	31/32	32/33
+/-	48	31	33	33	51	6	51	64	31	45
Greensward Academy, The King Edmund School										

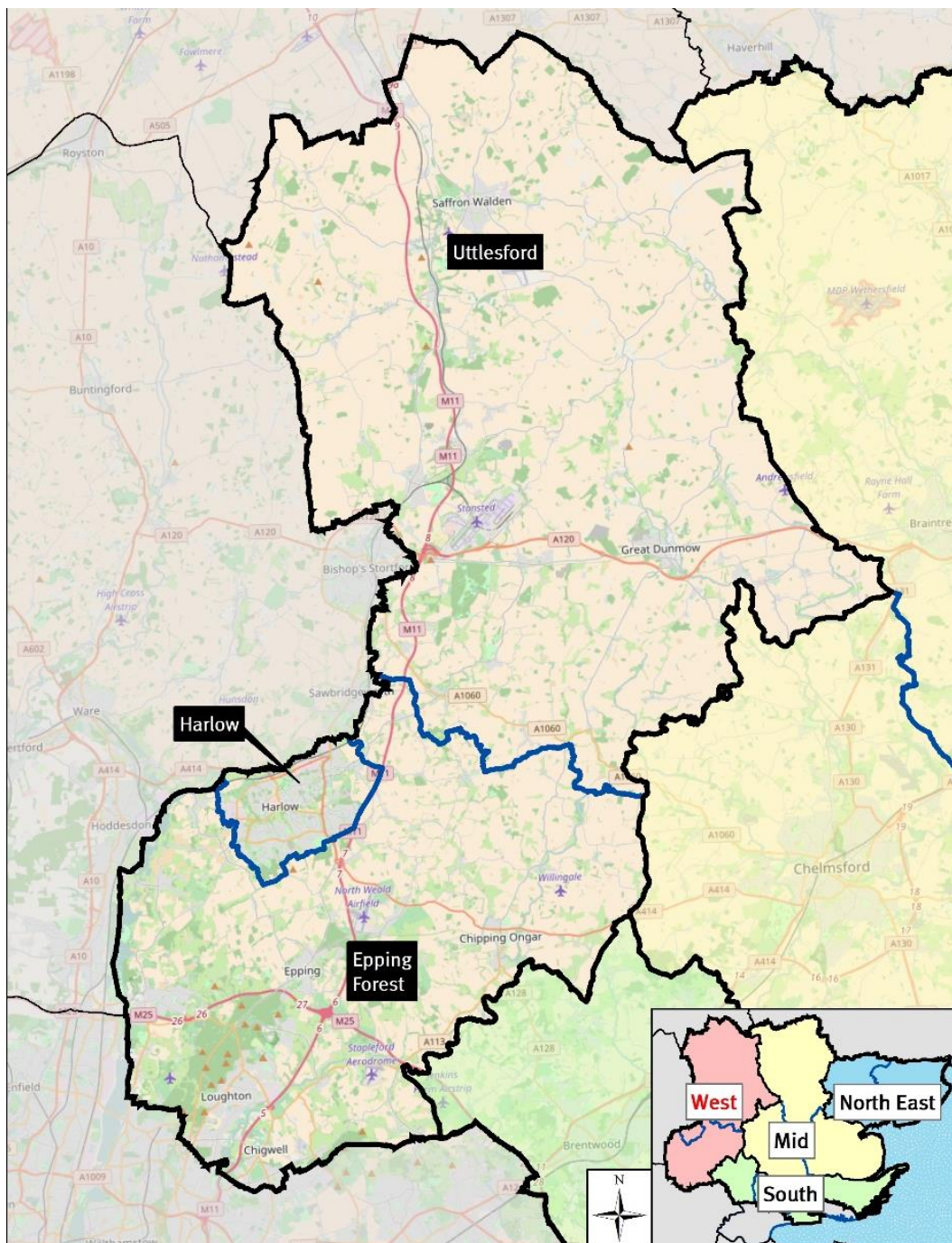
Number on Roll (NOR)

Year	NOR
23/24	3,138
24/25	3,138
25/26	3,123
26/27	3,116
27/28	3,084

Project Pipeline

School	Year	Description	Places
No expansion projects currently in pipeline			

3.4 West Essex



For the purposes of school organisation and place planning West Essex is Uttlesford and Epping Forest districts and Harlow. Demand for school places in this quadrant is influenced considerably by cross-border pupil movement as it borders Greater London and Hertfordshire authorities.

Harlow has an adopted Local Development Plan. Epping Forest's Plan is at Examination. Uttlesford has withdrawn the draft Plan that it submitted to the Secretary of State and is working on a new plan.

3.4.1 Epping Forest

Primary School Planning Groups

1. Ongar

Current PAN: 142

Current Capacity: 990

Reception Place Forecast

Year	23/24	24/25	25/26	26/27	27/28	28/29	29/30	30/31	31/32	32/33
+/-	32	15	16	14	14	14	14	15	15	15
Chipping Ongar Primary, Dr Walker's CE Primary, High Ongar Primary, Matching Green CE Primary, Moreton CE Primary, Ongar Primary										

Number on Roll (NOR)

Year	NOR
23/24	870
24/25	909
25/26	939
26/27	954
27/28	933

Project Pipeline

School	Year	Description	Places
No expansion projects currently in pipeline			

2. Epping

Current PAN: 225

Current Capacity: 1,600

Reception Place Forecast

Year	23/24	24/25	25/26	26/27	27/28	28/29	29/30	30/31	31/32	32/33
+/-	-8	-3	-12	-14	-17	-22	-27	-31	-35	-39
Coopersale and Theydon Garnon CE Primary, Epping, Epping Upland CE Primary, Ivy Chimneys Primary, St Andrew's CE Primary										

Number on Roll (NOR)

Year	NOR
23/24	1,478
24/25	1,561
25/26	1,642
26/27	1,677
27/28	1,705

Project Pipeline

School	Year	Description	Places
New Primary School	26/27	2 form entry new primary school	60/420

Planned new housing in this area is causing the forecast deficit of school places, and a site for a new primary school is included in the Local Plan. Temporary expansions will be put in place as required in the interim, while a new school is opened.

3. Waltham Abbey

Current PAN: 240

Current Capacity: 1,734

Reception Place Forecast

Year	23/24	24/25	25/26	26/27	27/28	28/29	29/30	30/31	31/32	32/33
+/-	-8	13	-2	-5	-7	-8	-11	-11	-10	-10

High Beech CE Primary, Hillhouse CE Primary, Leverton Primary, Upshire Primary, Waltham Holy Cross Primary

Number on Roll (NOR)

Year	NOR
23/24	1,627
24/25	1,620
25/26	1,657
26/27	1,682
27/28	1,727

Project Pipeline

School	Year	Description	Places
Hillhouse CE Primary	23/24	½ form entry expansion	15/105

4. Buckhurst Hill / Loughton

Current PAN: 585

Current Capacity: 4,303

Reception Place Forecast

Year	23/24	24/25	25/26	26/27	27/28	28/29	29/30	30/31	31/32	32/33
+/-	25	70	53	55	55	58	58	58	60	62

Alderton Infant, Alderton Junior, Buckhurst Hill Primary, Hereward Primary, St John's CE Primary, St John Fisher Catholic Primary, Staples Road Primary, Theydon Bois Primary, Thomas Willingale Primary, White Bridge Primary

Number on Roll (NOR)

Year	NOR
23/24	3,693
24/25	3,685
25/26	3,745
26/27	3,742
27/28	3,773

Project Pipeline

School	Year	Description	Places
No expansion projects currently in pipeline			

5. Chigwell / Lambourne

Current PAN: 170

Current Capacity: 1,129

Reception Place Forecast

Year	23/24	24/25	25/26	26/27	27/28	28/29	29/30	30/31	31/32	32/33
+/-	10	28	15	16	16	17	18	18	18	19
Chigwell Primary, Chigwell Row Infant, Lambourne Primary, Limes Farm Infant, Limes Farm Junior, Stapleford Abbotts Primary										

Number on Roll (NOR)

Year	NOR
23/24	1,012
24/25	1,023
25/26	1,071
26/27	1,091
27/28	1,090

Project Pipeline

School	Year	Description	Places
Chigwell Row Infant School	24/25	Significant change from 90 place infant school to 105 place primary school	-15/15

In this planning group the schools currently have more capacity in KS1 than KS2. The change proposed at Chigwell Row Infant, while reducing capacity in KS1, will increase it in KS2 and align to forecast demand in the area.

6. Nazeing (not grouped)

Current PAN: 45

Current Capacity: 300

Reception Place Forecast

Year	23/24	24/25	25/26	26/27	27/28	28/29	29/30	30/31	31/32	32/33
+/-	8	5	4	4	4	4	4	4	5	5
Nazeing Primary										

Number on Roll (NOR)

Year	NOR
23/24	271
24/25	282
25/26	292
26/27	295
27/28	295

Project Pipeline

School	Year	Description	Places
No expansion projects currently in pipeline			

7. Roydon (not grouped)

Current PAN: 30
 Current Capacity: 210

Reception Place Forecast

Year	23/24	24/25	25/26	26/27	27/28	28/29	29/30	30/31	31/32	32/33
+/-	-2	7	1	1	1	1	1	1	1	1
Roydon Primary										

Number on Roll (NOR)

Year	NOR
23/24	212
24/25	210
25/26	209
26/27	207
27/28	202

Project Pipeline

School	Year	Description	Places
No expansion projects currently in pipeline			

Secondary School Planning Groups

1. Loughton

Current PAN: 857
Current Capacity: 5,213

Year 7 Place Forecast

Year	23/24	24/25	25/26	26/27	27/28	28/29	29/30	30/31	31/32	32/33
+/-	43	8	68	13	56	-13	55	-14	71	35
Davenant, Debden Park High School, Roding Valley High School, West Hatch High School										

Number on Roll (NOR)

Year	NOR
23/24	5,208
24/25	5,274
25/26	5,225
26/27	5,240
27/28	5,192

Project Pipeline

School	Year	Description	Places
No expansion projects currently in pipeline			

2. Epping / Waltham Abbey

Current PAN: 360
Current Capacity: 1,920

Year 7 Place Forecast

Year	23/24	24/25	25/26	26/27	27/28	28/29	29/30	30/31	31/32	32/33
+/-	8	-12	15	-17	1	-31	-10	-48	-31	-37
Epping St John's CE, King Harold										

Number on Roll (NOR)

Year	NOR
23/24	1,864
24/25	1,952
25/26	2,003
26/27	2,049
27/28	2,054

Project Pipeline

School	Year	Description	Places
New Secondary School	30/31	6 form entry new secondary school	180/900

A site for a new secondary school is included in Epping Forest's emerging Local Plan to the south of Harlow. This is also linked to new housing east of Harlow, which also includes provision for another new secondary school.

3. Ongar (not grouped)

Current PAN: 120

Current Capacity: 800

Year 7 Place Forecast

Year	23/24	24/25	25/26	26/27	27/28	28/29	29/30	30/31	31/32	32/33
+/-	-23	-12	-6	-9	-28	-32	-13	-8	-11	-14
The Ongar Academy										

Number on Roll (NOR)

Year	NOR
23/24	722
24/25	749
25/26	767
26/27	768
27/28	783

Project Pipeline

School	Year	Description	Places
No expansion projects currently in pipeline			

At present a large proportion of students attending the school come from out of area. Local demographics and new house building will be monitored closely to determine if/ when an expansion is required, and a solution developed with the school. This will also be linked to Local Plan housing and new school provision being planned.

3.4.2 Harlow

Primary School Planning Groups

1. Harlow east

Current PAN: 300

Current Capacity: 2,460

Reception Place Forecast

Year	23/24	24/25	25/26	26/27	27/28	28/29	29/30	30/31	31/32	32/33
+/-	-32	8	-27	-39	-52	-69	-83	-96	-108	-120

Church Langley Primary, Churchgate CE Primary, Fawbert and Barnard Primary, Harlowbury Primary, Henry Moore Primary, Newhall Primary, Potter Street Primary

Number on Roll (NOR)

Year	NOR
23/24	2,261
24/25	2,275
25/26	2,345
26/27	2,415
27/28	2,503

Project Pipeline

School	Year	Description	Places
Harlowbury Primary	25/26	1 form entry expansion	30/210
Newhall Primary	27/28	1 form entry expansion	30/210

Demand is driven by new housing. Education land is also allocated in Harlow's Local Plan on the proposed 'Garden Community' development to the east, , and will enable new primary schools to be built to accommodate long term demand for places.

2. Harlow southwest

Current PAN: 630

Current Capacity: 4,398

Reception Place Forecast

Year	23/24	24/25	25/26	26/27	27/28	28/29	29/30	30/31	31/32	32/33
+/-	104	96	75	66	61	53	43	35	24	13

Abbotsweld Primary, Holy Cross Catholic Primary, Jerounds Primary, Katherines Primary, Kingsmoor Primary, Latton Green Primary, Longwood Primary, Milwards Primary, Pear Tree Mead Primary, Purford Green Primary, St James CE Primary, St Luke's Catholic Primary, Water Lane Primary, William Martin CE Infant, William Martin CE Junior

Number on Roll (NOR)

Year	NOR
23/24	3,899
24/25	3,877
25/26	3,868
26/27	3,918
27/28	3,946

Project Pipeline

School	Year	Description	Places
No expansion projects currently in pipeline			

3. Harlow northwest

Current PAN: 420

Current Capacity: 2,984

Reception Place Forecast

Year	23/24	24/25	25/26	26/27	27/28	28/29	29/30	30/31	31/32	32/33
+/-	33	64	38	38	41	41	38	34	30	26

Cooks Spinney Primary, The Downs Primary, Freshwaters Primary, St Alban's Catholic Primary, Tany's Dell Primary, Hare Street Primary, Little Parndon Primary, Pemberley Primary

Number on Roll (NOR)

Year	NOR
23/24	2,886
24/25	2,839
25/26	2,819
26/27	2,793
27/28	2,760

Project Pipeline

School	Year	Description	Places
No expansion projects currently in pipeline			

Secondary School Planning Groups

1. Harlow

Current PAN: 1,252

Current Capacity: 7,290

Year 7 Place Forecast

Year	23/24	24/25	25/26	26/27	27/28	28/29	29/30	30/31	31/32	32/33
+/-	54	-19	0	35	15	-19	9	-7	42	-40
Burnt Mill Academy, Mark Hall Academy, Passmores Academy, BMAT STEM, Sir Frederick Gibberd College, St Mark's Catholic, Stewards Academy										

Number on Roll (NOR)

Year	NOR
23/24	6,185
24/25	6,351
25/26	6,503
26/27	6,592
27/28	6,661

Project Pipeline

School	Year	Description	Places
Sir Frederick Gibberd College	23/24	1 form entry expansion in existing accommodation	30/0

Sir Frederick Gibberd is now in its new, permanent accommodation and will expand to its maximum capacity meet local demand. The Local Plan includes a site for new secondary provision, east of Harlow, to mitigate the long term need for school places.

3.4.3 Uttlesford

Primary School Planning Groups

1. Sampfords / Thaxted / Wimbish

Current PAN: 106

Current Capacity: 764

Reception Place Forecast

Year	23/24	24/25	25/26	26/27	27/28	28/29	29/30	30/31	31/32	32/33
+/-	16	32	23	22	21	21	20	20	20	20
Debden CE Primary, Great Sampford Primary, Radwinter CE Primary, Thaxted Primary, Wimbish Primary										

Number on Roll (NOR)

Year	NOR
23/24	694
24/25	663
25/26	644
26/27	626
27/28	605

Project Pipeline

School	Year	Description	Places
No expansion projects currently in pipeline			

2. Saffron Walden

Current PAN: 210

Current Capacity: 1,490

Reception Place Forecast

Year	23/24	24/25	25/26	26/27	27/28	28/29	29/30	30/31	31/32	32/33
+/-	14	25	12	11	8	7	6	5	5	4
Katherine Semar Infant, Katherine Semar Junior, R A Butler Infant, R A Butler Junior, St Mary's CE Primary, St Thomas More Catholic Primary										

Number on Roll (NOR)

Year	NOR
23/24	1,495
24/25	1,481
25/26	1,469
26/27	1,448
27/28	1,418

Project Pipeline

School	Year	Description	Places
No expansion projects currently in pipeline			

3. Stansted

Current PAN: 233
Current Capacity: 1,653

Reception Place Forecast

Year	23/24	24/25	25/26	26/27	27/28	28/29	29/30	30/31	31/32	32/33
+/-	38	30	18	15	10	7	4	2	1	0
Bentfield Primary, Birchanger CE Primary, Elsenham CE Primary, Farnham CE Primary, Henham And Ugley Primary, Magna Carta Primary, Manuden Primary, St Mary's CE Primary										

Number on Roll (NOR)

Year	NOR
23/24	1,464
24/25	1,494
25/26	1,516
26/27	1,525
27/28	1,525

Project Pipeline

School	Year	Description	Places
No expansion projects currently in pipeline			

4. Dunmow

Current PAN: 170
Current Capacity: 1,100

Reception Place Forecast

Year	23/24	24/25	25/26	26/27	27/28	28/29	29/30	30/31	31/32	32/33
+/-	33	24	7	-4	-14	-22	-30	-37	-40	-42
Dunmow St Mary's Primary, Great Dunmow Primary, Great Easton CE Primary, Helena Romanes School										

Number on Roll (NOR)

Year	NOR
23/24	1,128
24/25	1,178
25/26	1,236
26/27	1,269
27/28	1,288

Project Pipeline

School	Year	Description	Places
Helena Romanes School	25/26	1 form entry expansion	30/210
New Primary School	30/31	2 form entry new primary school	60/420

Options on sites for new primary schools, secured through S106 agreements will provide the ability to deliver new primary facilities to meet the increasing local need for school places.

5. Hatfield / Sheering

Current PAN: 81
Current Capacity: 567

Reception Place Forecast

Year	23/24	24/25	25/26	26/27	27/28	28/29	29/30	30/31	31/32	32/33
+/-	16	20	16	16	15	15	14	14	14	14
Hatfield Heath Primary, Little Hallingbury CE Primary, Sheering CE Primary, St Mary's CE Primary										

Number on Roll (NOR)

Year	NOR
23/24	479
24/25	480
25/26	481
26/27	470
27/28	463

Project Pipeline

School	Year	Description	Places
No expansion projects currently in pipeline			

6. Clavering / Newport / Rickling

Current PAN: 75
Current Capacity: 513

Reception Place Forecast

Year	23/24	24/25	25/26	26/27	27/28	28/29	29/30	30/31	31/32	32/33
+/-	18	16	14	14	13	13	13	12	12	12
Clavering Primary, Newport Primary, Rickling CE Primary										

Number on Roll (NOR)

Year	NOR
23/24	479
24/25	476
25/26	463
26/27	452
27/28	431

Project Pipeline

School	Year	Description	Places
No expansion projects currently in pipeline			

7. Felsted

Current PAN: 105

Current Capacity: 765

Reception Place Forecast

Year	23/24	24/25	25/26	26/27	27/28	28/29	29/30	30/31	31/32	32/33
+/-	9	20	11	10	8	7	6	6	6	6
Felsted Primary, Flich Green Primary, Stebbing Primary										

Number on Roll (NOR)

Year	NOR
23/24	697
24/25	692
25/26	688
26/27	686
27/28	683

Project Pipeline

School	Year	Description	Places
No expansion projects currently in pipeline			

8. Takeley

Current PAN: 90

Current Capacity: 690

Reception Place Forecast

Year	23/24	24/25	25/26	26/27	27/28	28/29	29/30	30/31	31/32	32/33
+/-	22	12	9	8	7	7	6	6	6	6
Roseacres Primary, Takeley Primary										

Number on Roll (NOR)

Year	NOR
23/24	565
24/25	580
25/26	571
26/27	572
27/28	571

Project Pipeline

School	Year	Description	Places
No expansion projects currently in pipeline			

9. Ashdon (not grouped)

Current PAN: 15

Current Capacity: 105

Reception Place Forecast

Year	23/24	24/25	25/26	26/27	27/28	28/29	29/30	30/31	31/32	32/33
+/-	6	4	5	5	5	5	5	5	5	5
Ashdon Primary										

Number on Roll (NOR)

Year	NOR
23/24	64
24/25	59
25/26	58
26/27	64
27/28	63

Project Pipeline

School	Year	Description	Places
No expansion projects currently in pipeline			

10. Crishall (not grouped)

Current PAN: 15

Current Capacity: 105

Reception Place Forecast

Year	23/24	24/25	25/26	26/27	27/28	28/29	29/30	30/31	31/32	32/33
+/-	3	6	5	5	5	5	5	4	4	4
Crishall Holy Trinity & St Nicholas CE Primary										

Number on Roll (NOR)

Year	NOR
23/24	114
24/25	108
25/26	104
26/27	100
27/28	89

Project Pipeline

School	Year	Description	Places
No expansion projects currently in pipeline			

11. Great Chesterford (not grouped)

Current PAN: 30
 Current Capacity: 210

Reception Place Forecast

Year	23/24	24/25	25/26	26/27	27/28	28/29	29/30	30/31	31/32	32/33
+/-	6	3	2	2	2	2	2	2	2	2
Great Chesterford CE Primary										

Number on Roll (NOR)

Year	NOR
23/24	207
24/25	206
25/26	208
26/27	203
27/28	196

Project Pipeline

School	Year	Description	Places
No expansion projects currently in pipeline			

12. Rodings (not grouped)

Current PAN: 30
 Current Capacity: 270

Reception Place Forecast

Year	23/24	24/25	25/26	26/27	27/28	28/29	29/30	30/31	31/32	32/33
+/-	-2	6	-2	-2	-2	-3	-3	-3	-3	-3
Rodings Primary										

Number on Roll (NOR)

Year	NOR
23/24	280
24/25	265
25/26	264
26/27	254
27/28	242

Project Pipeline

School	Year	Description	Places
No expansion projects currently in pipeline			

The school has additional accommodation to enable it to admit additional pupils when there are large spikes in local demand.

Secondary School Planning Groups

1. Helena Romanes (not grouped)

Current PAN: 270
Current Capacity: 1,563

Year 7 Place Forecast

Year	23/24	24/25	25/26	26/27	27/28	28/29	29/30	30/31	31/32	32/33
+/-	25	23	7	-16	-12	6	-13	5	12	-8
Helena Romanes School										

Number on Roll (NOR)

Year	NOR
23/24	1,345
24/25	1,413
25/26	1,455
26/27	1,506
27/28	1,543

Project Pipeline

School	Year	Description	Places
No expansion projects currently in pipeline			

2. Forest Hall (not grouped)

Current PAN: 132
Current Capacity: 660

Year 7 Place Forecast

Year	23/24	24/25	25/26	26/27	27/28	28/29	29/30	30/31	31/32	32/33
+/-	-2	3	-5	-16	-18	-2	-21	-11	-7	-16
Forest Hall School										

Number on Roll (NOR)

Year	NOR
23/24	551
24/25	583
25/26	647
26/27	693
27/28	719

Project Pipeline

School	Year	Description	Places
Forest Hall School	26/27	½ form entry expansion	18/90

Demand for school places at Forest Hall School is influenced school place provision in Bishop's Stortford. The situation is being closely monitored and should there be further demand for school places at Forest Hall there is an option available to expand the school further, currently indicated as 2026/27..

3. Newport / Saffron Walden

Current PAN: 480

Current Capacity: 3,080

Year 7 Place Forecast

Year	23/24	24/25	25/26	26/27	27/28	28/29	29/30	30/31	31/32	32/33
+/-	21	10	27	61	20	88	99	99	114	100
Joyce Frankland Academy, Saffron Walden County High										

Number on Roll (NOR)

Year	NOR
23/24	3,280
24/25	3,287
25/26	3,272
26/27	3,195
27/28	3,142

Project Pipeline

School	Year	Description	Places
No expansion projects currently in pipeline			

4. Past Expansions and New Schools in Essex

The tables below summarise the permanent expansions and new schools that have been delivered at mainstream schools across Essex over the past 7 years. This list does not include numerous other capital investments in the school estate such as maintenance work, temporary accommodation, or accommodation rebuild.

Mid Essex

Braintree

School	Project Type
New Rickstones Academy	Expansion
Alec Hunter Secondary	Expansion
Chipping Hill Primary	Expansion
Cressing Primary	Expansion
De Vere Primary	Expansion
Earls Colne Primary	Expansion
John Bunyan Primary	Expansion
Silver End Primary	Expansion
St Giles Primary	Expansion

Chelmsford

School	Project Type
St Luke's Park Primary	New School
Beaulieu Park School	New School
Boreham Primary	Expansion
Broomfield Primary	Expansion
Little Waltham Primary	Expansion
Maltese Road Primary	New School
Margaretting Primary	Expansion
Moulsham High	Expansion
Moulsham Infant	Expansion
Moulsham Junior	Expansion
Springfield Primary	Expansion

Maldon

School	Project Type
Ormiston Rivers Academy	Expansion

North East Essex

Colchester

School	Project Type
Braiswick Primary	New School
Camulos Academy	New School
Home Farm Primary	Expansion
Lakelands Primary	New School
Monkwick Infant	Expansion
Monkwick Junior	Expansion
Paxman Academy	New School
Philip Morant Secondary	Expansion
St John's Green Primary	Expansion
St Lawrence Primary	Expansion
St Michael's Primary	Expansion
Stanway Fiveways Primary	Expansion
Stanway Primary	Expansion
Stanway Secondary	Expansion
The Gilbert Secondary	Expansion
Trinity School	New School

Tendring

School	Project Type
Alresford Primary	Expansion
Clacton County High School	Expansion
Colne Secondary	Expansion
Hamford Primary	Expansion
Holland Haven Primary	Expansion
Lawford Primary	Expansion
Manningtree Secondary	Expansion
Mayflower Primary	Expansion
Ravens Academy	Expansion

South Essex

Basildon

School	Project Type
Abacus Primary	Expansion
Beauchamps High	Expansion
Brightside Primary	Expansion
Ghyllgrove Primary	Expansion
Lee Chapel Primary	Expansion
Merrylands Primary	Expansion
Northlands Primary	Expansion
Phoenix Primary	Expansion
Runwell Primary	Expansion
Ryedene Primary	Expansion
Whitmore Primary	Expansion

Brentwood

School	Project Type
Hogarth Primary	Expansion
Larchwood Primary	Expansion
Mountnessing Primary	Expansion
Warley Primary	Expansion
West Horndon Primary	Expansion

Castle Point

School	Project Type
Northwick Park Primary	Expansion

Rochford

School	Project Type
Barling Magna Primary	Expansion
Riverside Primary	Expansion
Fitzwimarc Secondary	Expansion
Sweyne Park School	Expansion
Westerings Primary	Expansion

West Essex

Epping Forest

School	Project Type
Coopersale & Theydon Garnon Primary	Expansion
Epping Primary	Expansion
Ivy Chimneys	Expansion
Ongar Academy	New School
Roding Valley Secondary	Expansion
St Andrew's Primary	Expansion
West Hatch Secondary	Expansion
White Bridge Primary	Expansion

Harlow

School	Project Type
Freshwaters Primary	Expansion
Kingsmoor Primary	Expansion
Longwood Primary	Expansion
Newhall Primary	New School
Pear Tree Mead Primary	Expansion
Sir Frederick Gibberd College	New School
The Downs Primary	Expansion

Uttlesford

School	Project Type
Clavering Primary	Expansion
Elsenham Primary	Expansion
Flitch Green Primary	Expansion
Forest Hall School	Expansion
Helena Romanes Primary	Expansion
Helena Romanes Secondary	Expansion
Joyce Frankland Secondary	Expansion
Magna Carta Primary	New School
Newport Primary	Expansion
R A Butler Infant	Expansion
R A Butler Junior	Expansion
Radwinter Primary	Expansion
Rodings Primary	Expansion
Roseacres Primary	New School
Stebbing Primary	Expansion
Wimbish Primary	Expansion

This information is issued by:
Essex County Council

Contact us:
school.organisation@essex.gov.uk

School Organisation & Place Planning
Essex County Council
County Hall, Chelmsford
Essex, CM1 1QH



Essex_CC



[facebook.com/essexcountycouncil](https://www.facebook.com/essexcountycouncil)

The information contained in this document can be translated, and/or made available in alternative formats, on request.

Published 31 January 2023